

THE MALE OF *PANDARUS SATYRUS* DANA

BY CHARLES B. WILSON

WESTFIELD, MASS.

## PANDARUS SATYRUS Dana.

*Pandarus satyrus* Dana, 1852, p. 1368; pl. 95, fig. 2, a to c.*Pandarus satyrus* Wilson, 1907, p. 415; pl. 31.

HOST AND RECORD OF SPECIMENS. Fifteen females with egg strings and two males were obtained from the pectoral fins of a large shark in the Atlantic Ocean, Lat.  $6^{\circ} 40''$  N., Long.  $24^{\circ} 35''$  W., Oct. 9, 1912, by Robert Cushman Murphy. The male of this species has never before been obtained, and hence a complete description of it is here given.

SPECIFIC CHARACTERS OF MALE. Carapace one-fifth wider than long, including the posterior lobes; lateral margins strongly convex; frontal plates considerably widened toward the outer ends, and entirely covering the basal joints of the first antennæ; posterior lobes wide, triangular, very bluntly rounded, and curved inward at the tips, which reach the posterior margin of the third thorax segment; grooves separating the cephalic and lateral areas shallow and indistinct; posterior margin straight; eyes invisible in the mature adult. The three free thorax segments together only three-fifths as long as the carapace, the second segment slightly wider than the third and fourth, which are about equal, the fourth segment the longest, its sides roundly pointed, and its posterior margin overlapping the genital segment. The latter is wider than long, spindle-shaped, with a pair of lateral and a pair of posterior lobes; it is not narrowed into a neck anteriorly where it joins the fourth segment, as is the case in *Pandarus cranchii*. The lateral lobes are small and triangular, and are armed with a larger terminal spine and several smaller ones along the inner margin. The posterior lobes are much larger, triangular, tapered to an acuminate point, and curved inward; the sixth legs are just inside the bases of these lobes on the posterior margin of the segment. Abdomen two-jointed, joints the same length, the basal one a trifle the wider; anal laminae

each nearly as large as one of the abdomen joints, obliquely truncated posteriorly and armed with four setæ, of which the inner one is the smallest, and is removed a little from the other three.

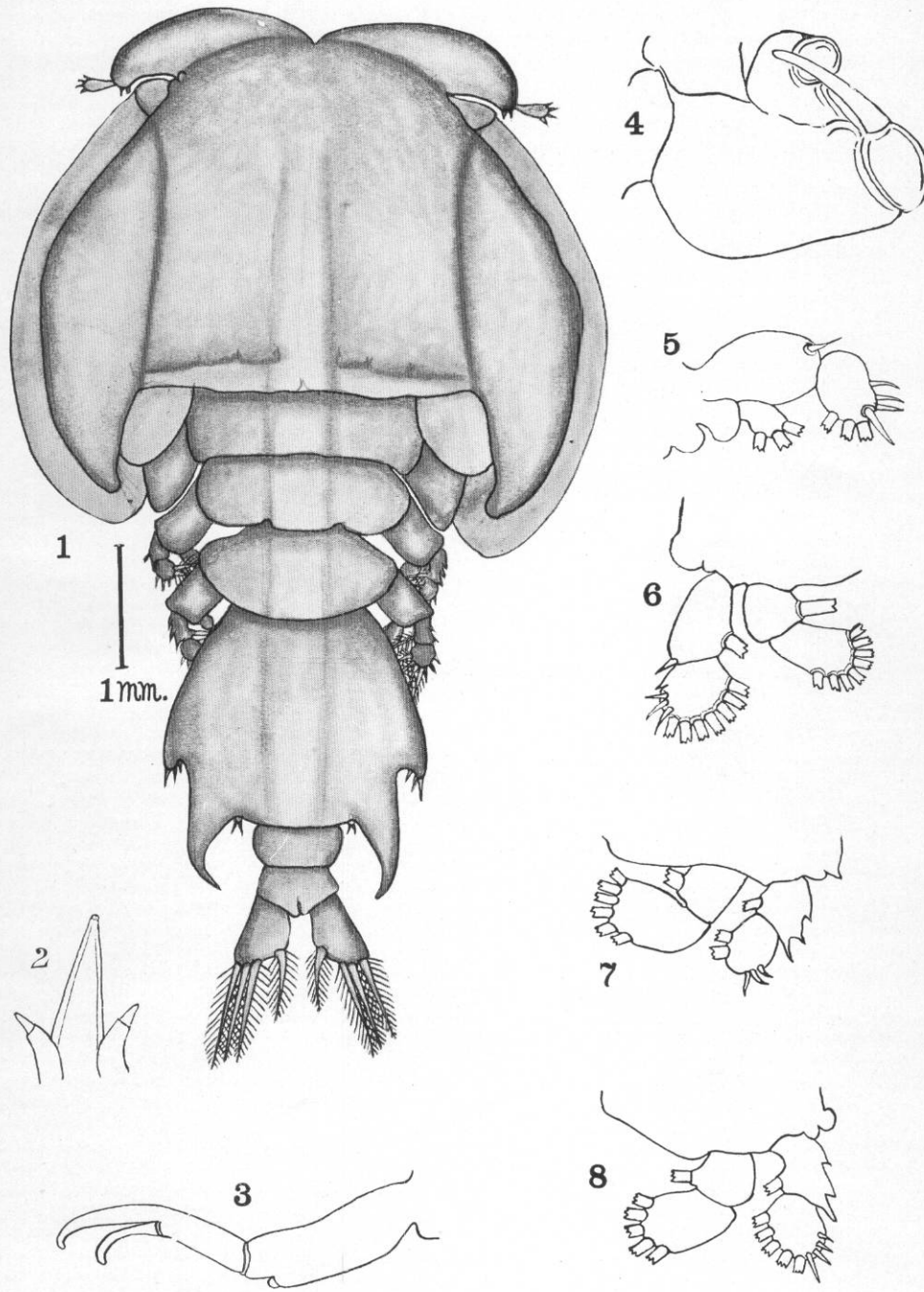
First antennæ very small and armed with short spines; second antennæ with a long terminal claw abruptly bent near its tip. Adhesion pads similar to those of the female, but smaller. First maxillæ bent outward away from the mouth-tube in a half circle like those of *Pandarus cranchii*; second maxillæ rather stout. Maxillipeds of moderate size; terminal claw long and slender, shutting down inside the immovable knobs, the space between the base of the claw and the knobs being greater than in any known species. Spines and setæ on the swimming legs arranged as follows: First exopod 1—0; 4—III; endopod 0—0; 0—III: second exopod 1—I; 3—VII: endopod 0—I; 0—VIII: third exopod 2—I; 3—II: endopod 0—I; 0—VI: fourth exopod 2—I; 4—V: endopod 0—I; 0—V.

Total length 8 mm. Length of carapace on midline 3 mm.; width 4.8 mm. Length of three free segments 1.8 mm.—of genital segment 2.2 mm.—of abdomen 1 mm.

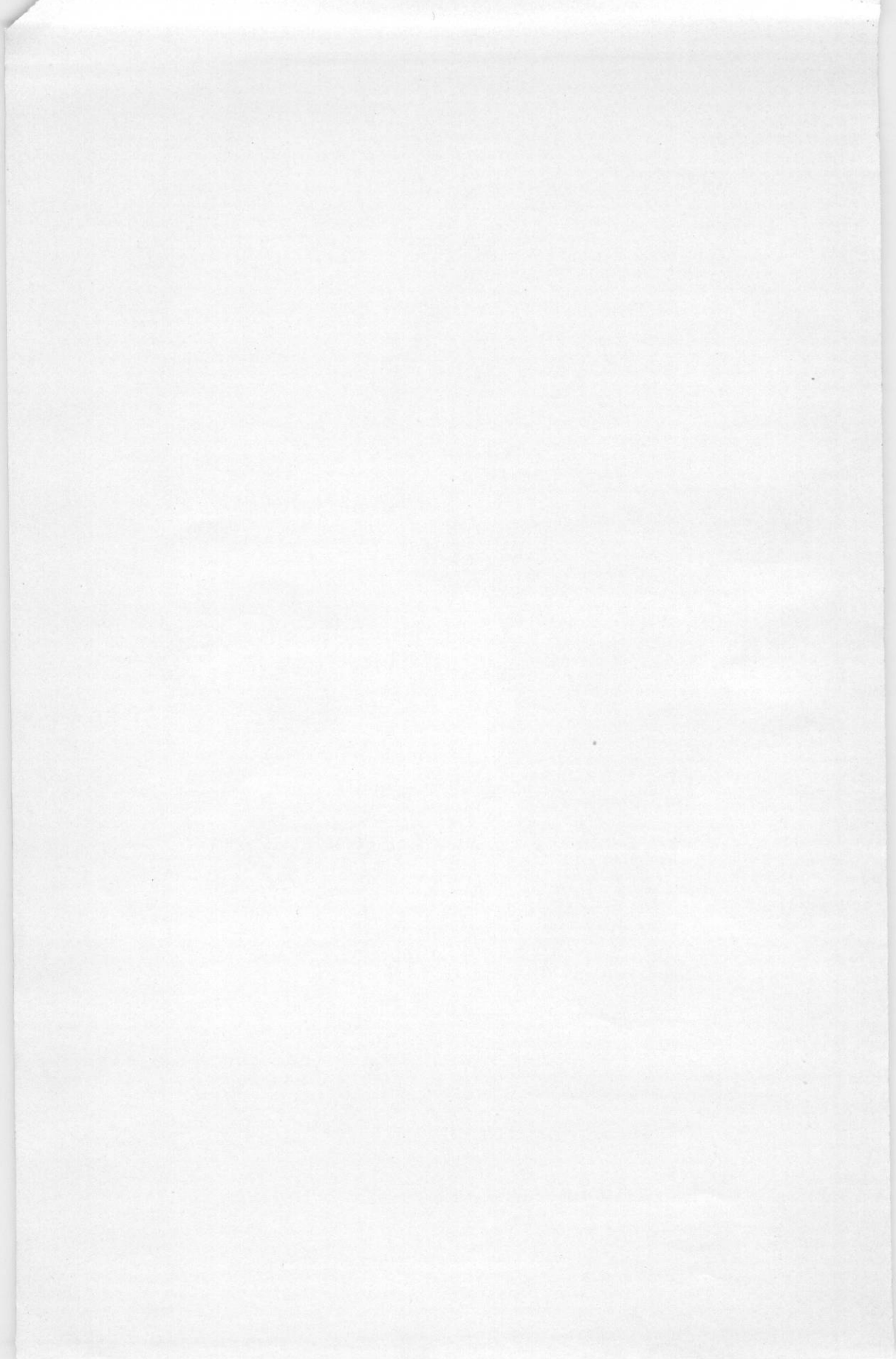
This male resembles that of *Pandarus cranchii* more than of any other species, but the two may be easily distinguished by the relative length of the three free thorax segments, by the lateral appendages on the first of these segments, by the presence or lack of a neck on the anterior end of the genital segment and by the size and shape of the secondary lobes on the posterior margin of the carapace.

EXPLANATION OF PLATE.

Fig. 1, Dorsal view of male of *Pandarus satyrus*. Fig. 2, Mouth-tube and first maxillæ. Fig. 3, Second maxilla. Fig. 4, Maxilliped. Figs. 5 to 8, First, second, third, and fourth swimming legs.



THE MALE OF *PANDARUS SATYRUS* DANA



---

*The Male of Pandarus Satyrus Dana.*

BY CHARLES B. WILSON.

Extracted from A REPORT  
on the

**SOUTH GEORGIA EXPEDITION**

SCIENCE BULLETIN OF THE MUSEUM  
OF

THE BROOKLYN INSTITUTE OF ARTS AND SCIENCES

Vol. 2, No. 4, pp. 41-102,

*November 5, 1914*

---

✓

