

HISTORIA

FISICA, POLITICA Y NATURAL

DE

LA ISLA DE CUBA.



FOLIO
64109
.C9
531
1855
V. 8

HISTORIA
FISICA, POLITICA Y NATURAL
DE
LA ISLA DE CUBA

POR
D. RAMON DE LA SAGRA.

—
SEGUNDA PARTE.

HISTORIA NATURAL

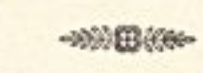
—
TOMO VIII.

ATLAS DE ZOOLOGIA.

—
~~Mo. Bot. Garden~~
1897.

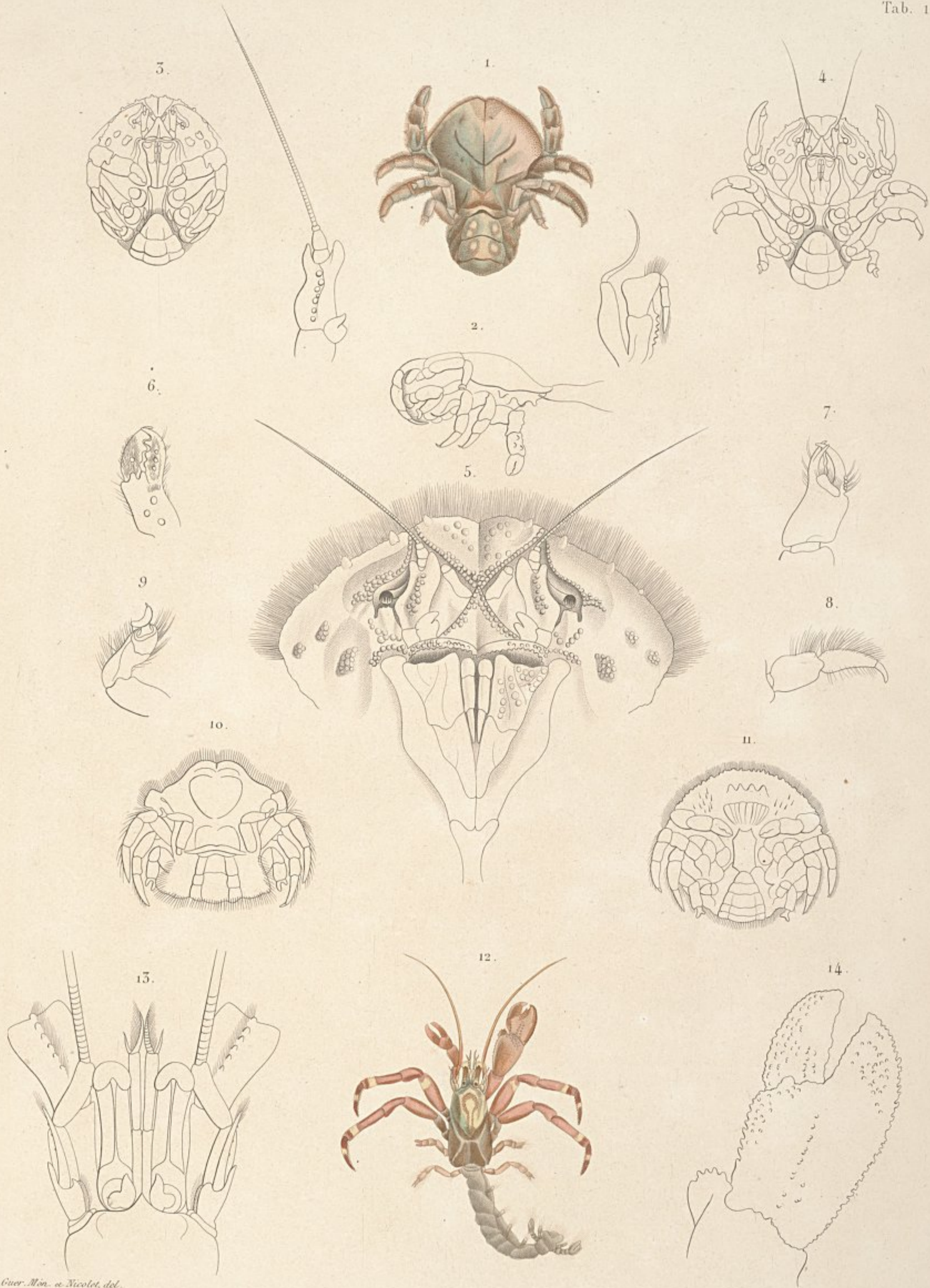
PARIS.

EN LA LIBRERIA DE ARTHUS BERTRAND,
LIBRERO DE LA SOCIEDAD DE GEOGRAFIA,
CALLE DE HAUTEFEUILLE, N° 23.



MDCCCLV

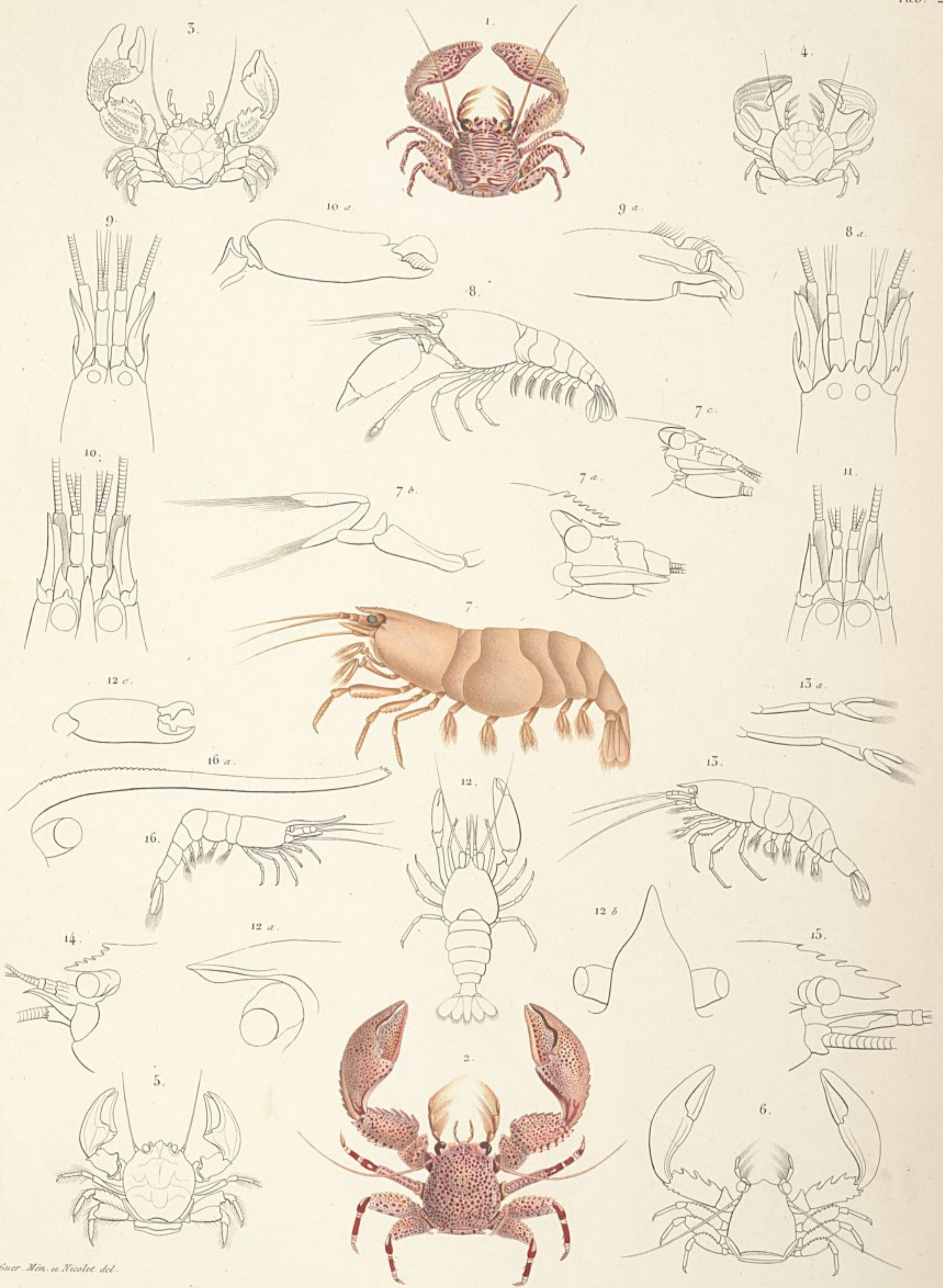
PARIS, IMPRENTA DE MAULDE Y RENOU
CALLE DE RIVOLI, N° 144.



Guer. Mén. et Nicolet, del.

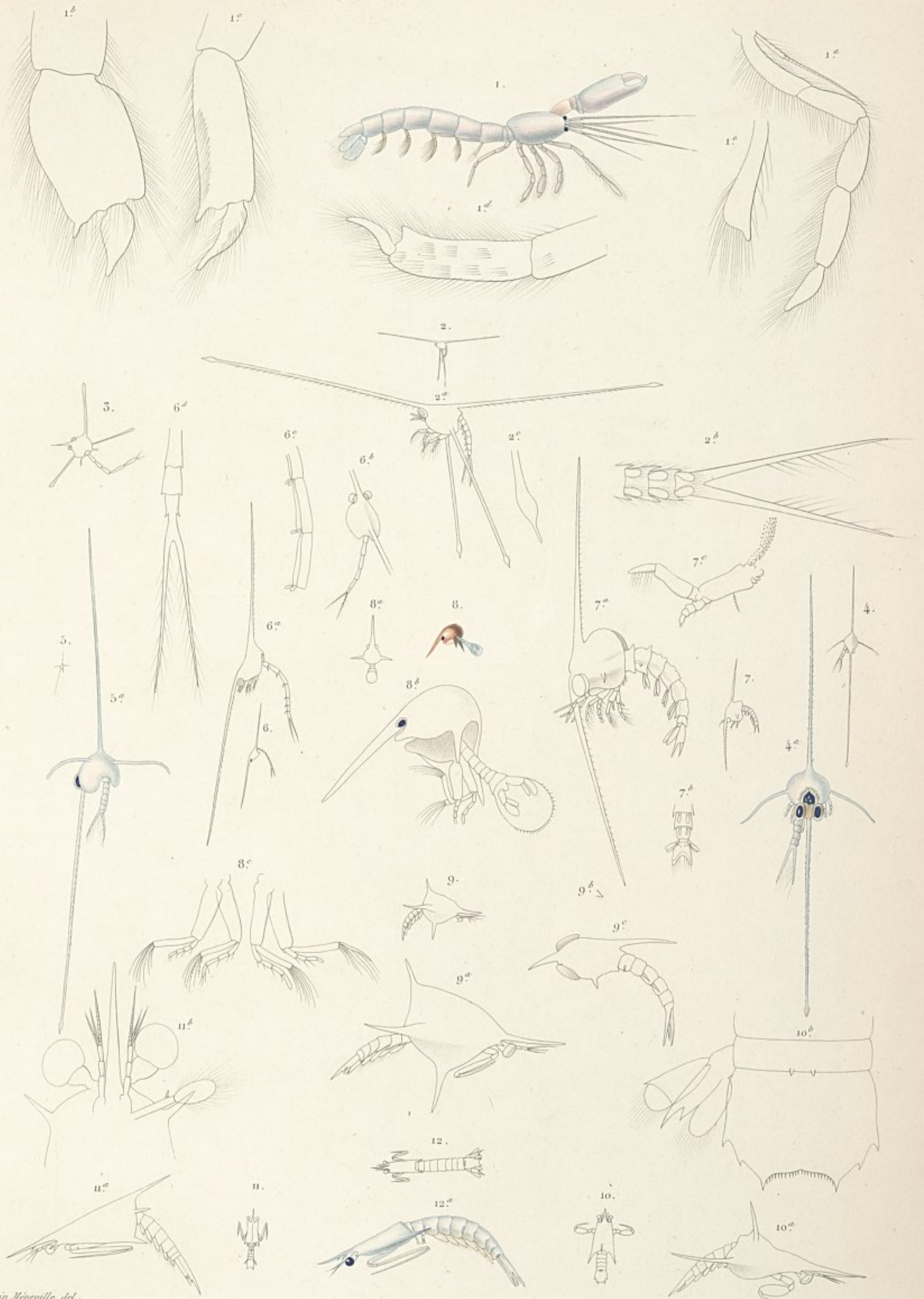
1 à 11. *Hypoconcha sabulosa*. Guer. Mén.

12 à 14. *Pagurus vinctipes*. Guer. Mén.



Guer. Mén. et Nicolet del.

- 1 *Porcellana egregia*. 2 *P. Amona*. 3 *P. Parrai*. 4 *P. Poeyi*. 5 *P. Sagrai*.
 6 *P. Gundlachii*. Guer. Mén. 7 *Aya Poeyi*. Guer. Mén. 8 *Aphius Sauloyi*. 9 *A. Candii*. 10 *A. Poeyi*.
 11 *A. Simus*. Guer. Mén. 12 *Pontonia mexicana*. Guer. Mén. 13 *Caridina americana*. Guer. Mén. 14 *Gnathophyllum americanum*. Guer. Mén.
 15 *Gn. elegans*. Risso. 16 *Hippolyte elongatus*. Guer. Mén.



Guérin Méneville, del.

Clorgé sc.

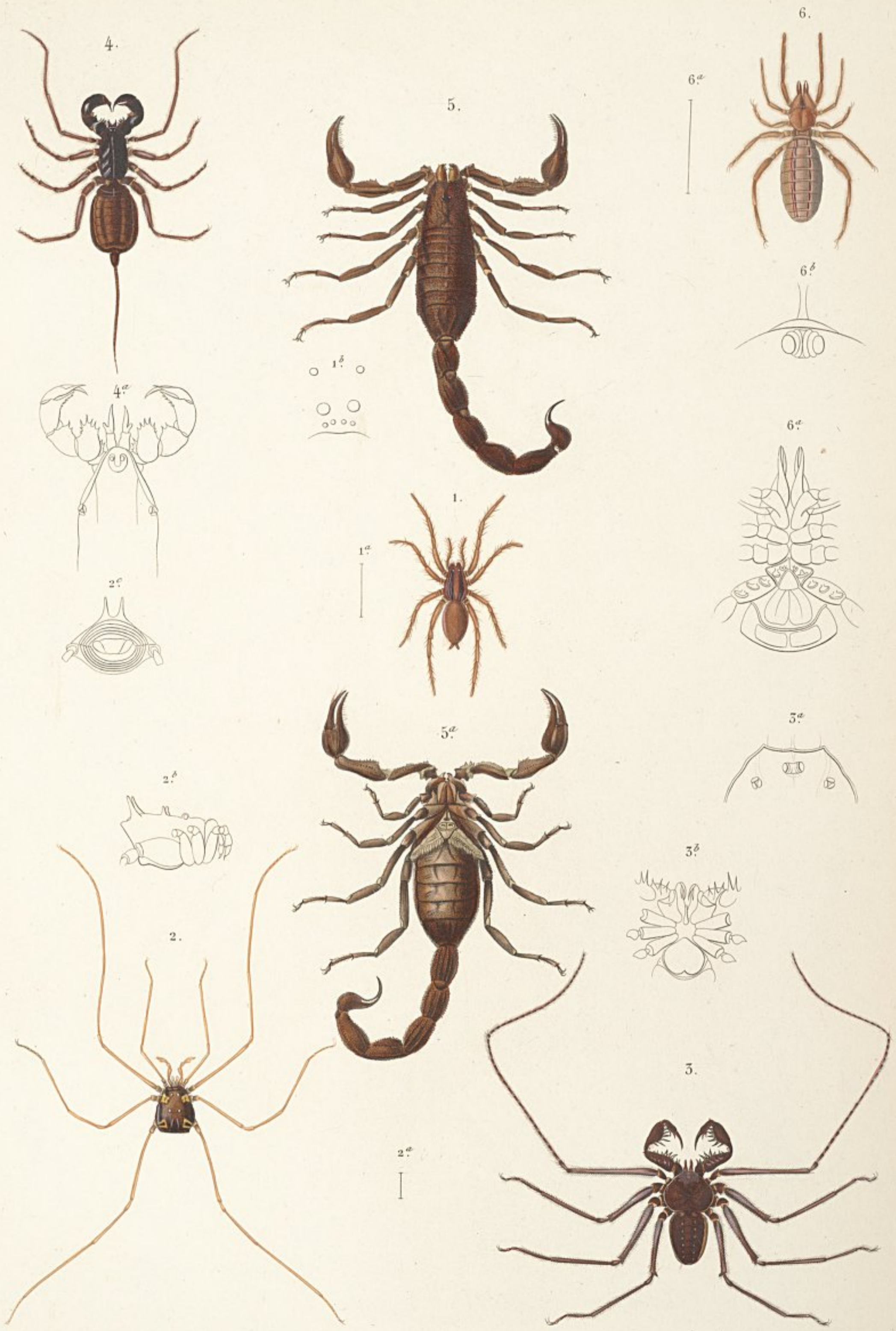
- | | | | |
|--|-----------------------------------|--|--|
| 1 <i>Callinidca elongata</i> , Guér. | 2 <i>Noca Leachii</i> , Guér. | 3 <i>Noca clavata</i> , Leach. | 4 <i>Noca Souleyetii</i> , Guér. |
| 5 <i>Noca Roscii</i> , Guér. | 6 <i>Noca Westwoodii</i> , Guér. | 7 <i>Noca gigas</i> , Westw. | 8 <i>Nocerides Guepratei</i> , Guér. |
| 9 <i>Eriochthus spiniventris</i> , Guér. | 10 <i>Smerdis Orbigny</i> , Guér. | 11 <i>Malmonectes Souleyetii</i> , Guér. | 12 <i>Almerichthys cylindricus</i> , Guér. |



Nicolot pinx.

Clergé sc.

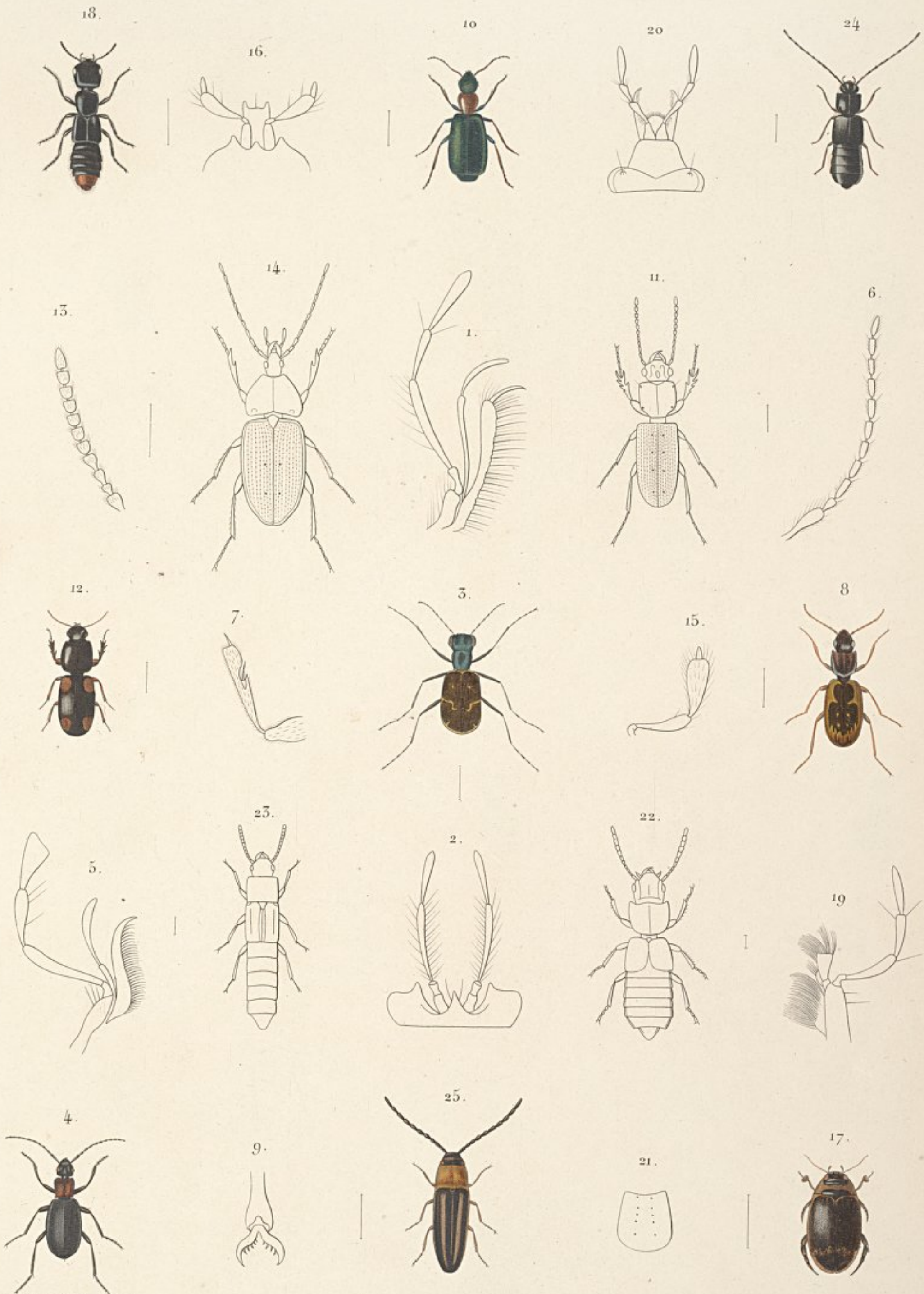
1 ♂ 1 ♀ *Mygale spinicrus*, Latr. 2 *Filistata cubecola*, Lucas. 3 *Sphasus Poeyi*, Lucas.
 4 *Drapsus insularis*, Lucas. 5 *Salticus Sagraus*, Lucas.



Nicolet pinx.

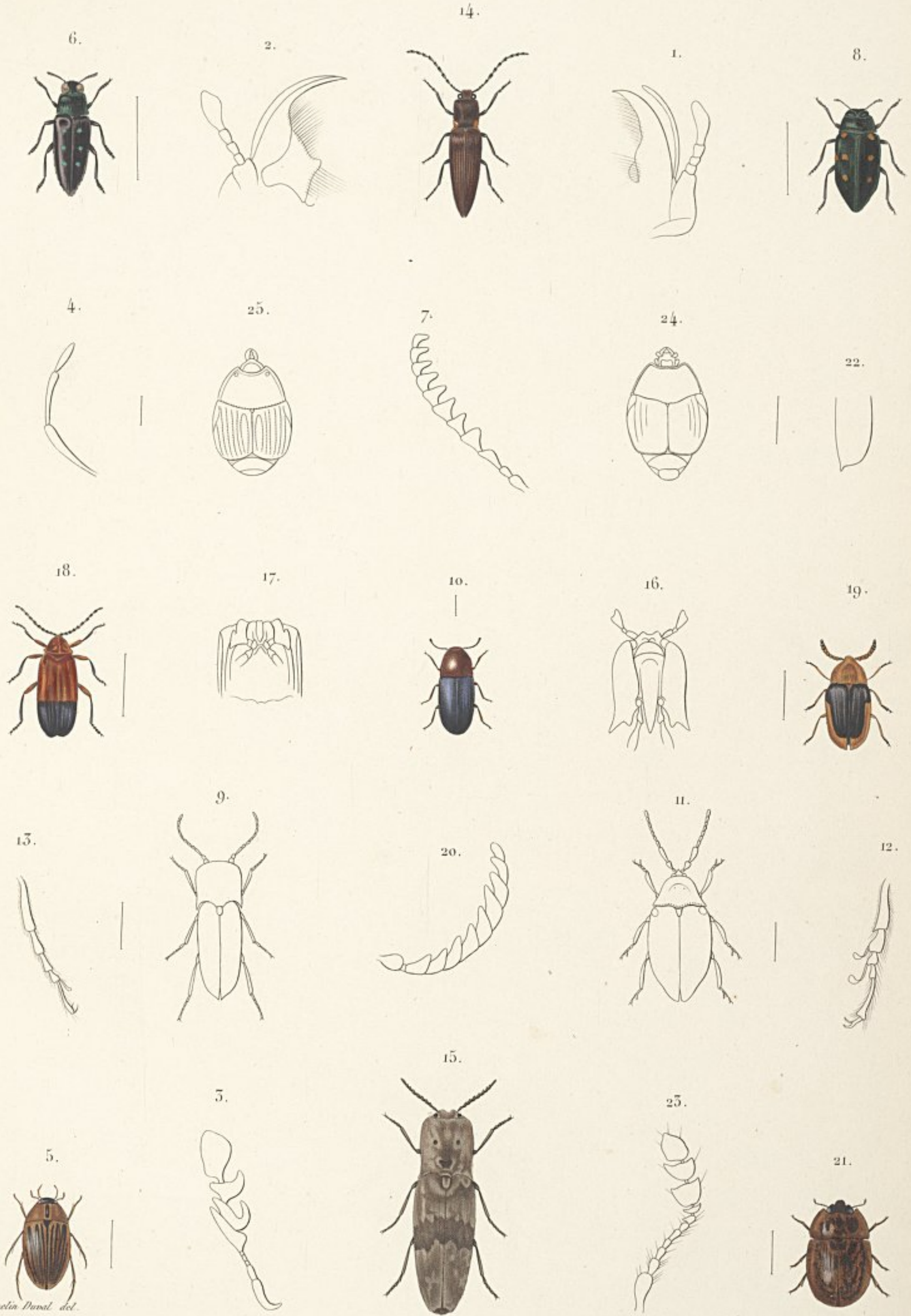
Clergé sc.

1 *Lycosa insularis*, Lucas. 2 *Cosmetus quadrimaculatus*, Gerv. 3 *Phrynus palmatus*, Herbat.
 4 *Chelyphonus antillianus*, Lucas. 5 *Scorpio Hemprichii*, Gerv. 6 *Galeodes cuba*, Lucas.



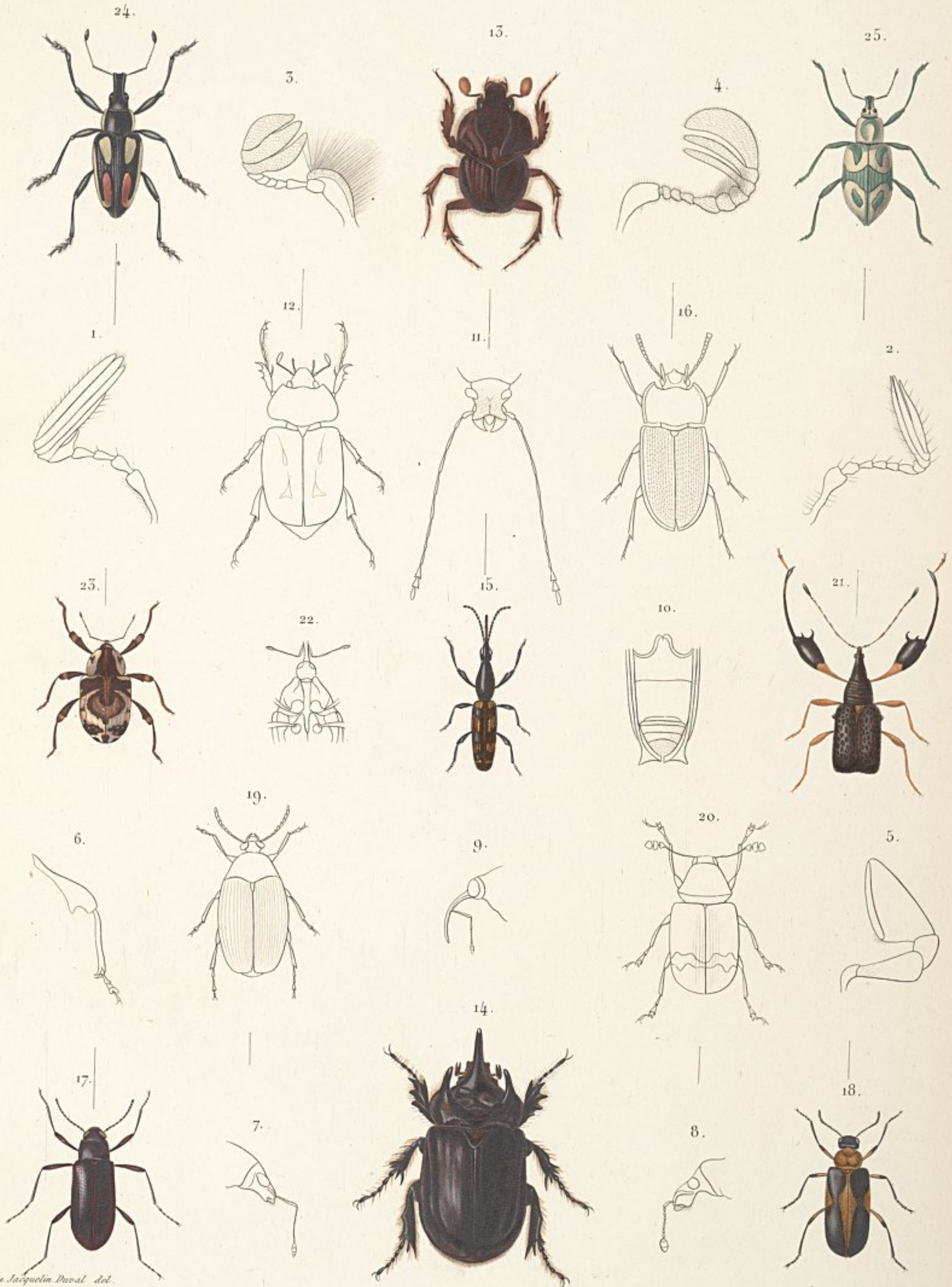
Mignaux et Jacquelin Du Val. del.

1 2 *Cicindela tortassa* (Détails) 3 *Cic. viridicollis*. 4 5 6 7 *Galerita erythrodera*. 8 9 *Cymindis sulcicollis*.
 10 *Callocida rubricollis*. 11 *Clavina limbipennis*. 12 *C. bipustulata*. 13 *Morio monilicornis* (Antenne) 14 *Codes insularis*.
 15 16 *Bombidion apicale* (Détails) 17 *Acilius circumscriptus*. 18 19 20 *Belenuchus agilis*. 21 *Philonthus varians* (Lucas)
 22 *Platysthetus exiguus*. 23 *Lispinus striola*. 24 *Picstus erythropus*. 25 *Dicrepidius Sagraianus*.



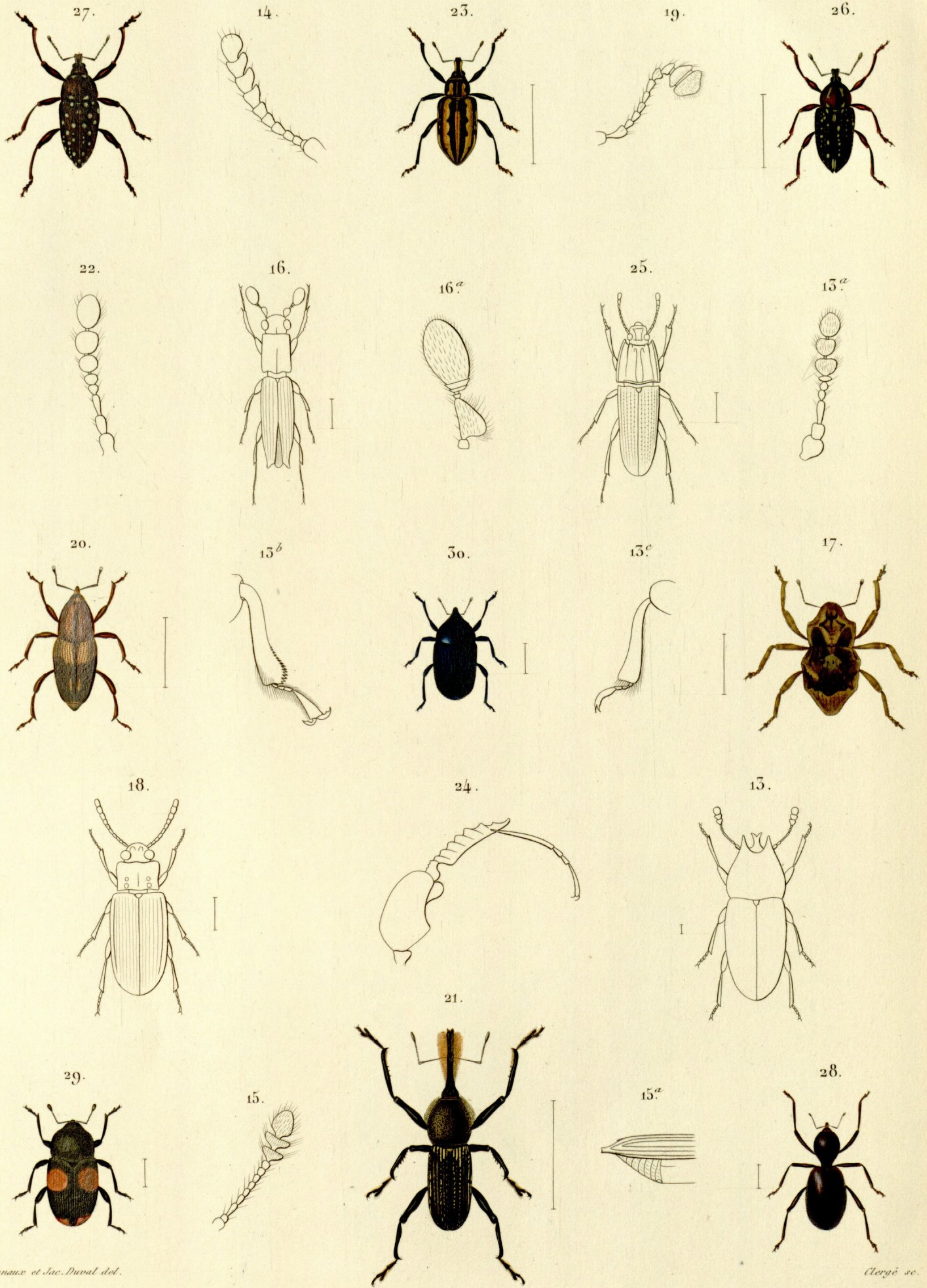
Mignans et Jacquelin Duvsl. del.

- | | | | |
|--|---|---|--------------------------------|
| 1 <i>Gyrinus minutus</i> (Détail) | 2 <i>Dineutes longimanus</i> (Détail) | 3 4 <i>Hydrophilus intermedius</i> (Détail) | 5 <i>Tropisternus collaris</i> |
| 6 7 <i>Puprestis Lasnicri</i> | 8 <i>Chrysobothris auronotata</i> | 9 <i>Hypocælus Lasnicri</i> | 10 <i>Drapetes cyanipennis</i> |
| 11 <i>Chelonarium punctatum</i> | 12 <i>Dicrepidius ramicornis</i> (Détail) | 13 <i>Monocepidius lobatus</i> (Détail) | 14 <i>Pyrophorus havanicus</i> |
| 15 16 17 <i>Alaus patricius</i> | 18 <i>Calopteron aulicum</i> | 19 20 <i>Alecton discoidalis</i> | 21 <i>Lobiopa decumana</i> |
| 22 23 <i>Dermestes vulpinus</i> (Détail) | 24 <i>Omalodes ruficlavis</i> | 25 <i>Hister confinis</i> | |



Mignaux et Jacquelin Duvai. del.

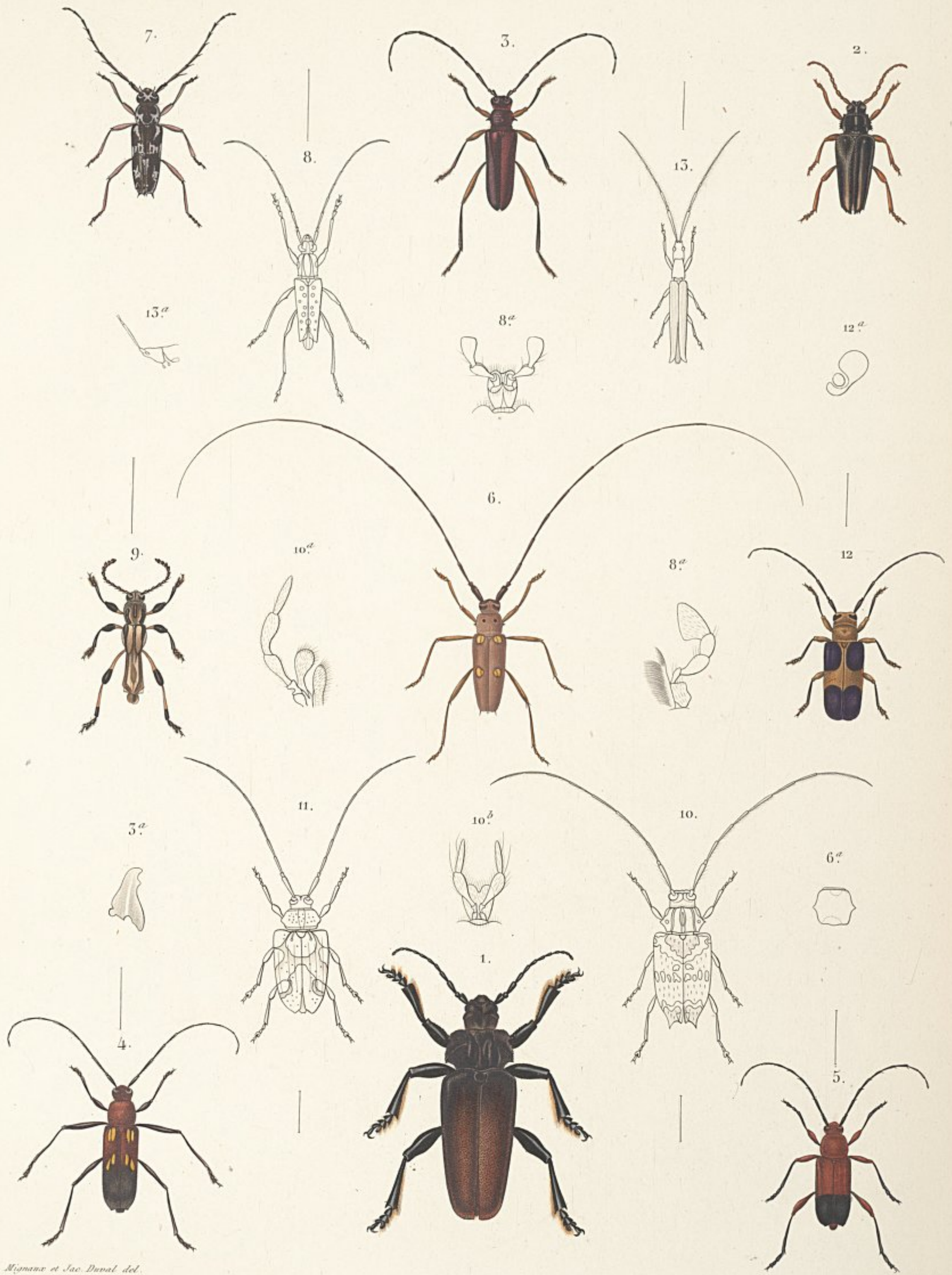
- | | | | |
|---|---|---|---|
| 1 <i>Ancylonycha confusa</i> (Détail) | 2 <i>Cyclocephala signata</i> (Détail) | 3 <i>Trox punctatus</i> (Détail) | 4 <i>Paspalus interstitialis</i> (Détail) |
| 5 <i>Opatrinus anthracinus</i> (Détail) | 6 <i>Cryptorhynchus difficilis</i> (Détail) | 7 <i>Lachnopus sublineatus</i> (Détail) | 8 <i>Prepodes spectabilis</i> (Det) |
| 9 <i>Macromerus clavipes</i> (Détail) | 10 <i>Belopherus militaris</i> (Détail) | 11 <i>Anthrribus fasciularis</i> (Détail) | 12 <i>Cyclocephala signata</i> |
| 13 <i>Athyreus castaneus</i> | 14 <i>Strategus Anachoreta.</i> | 15 <i>Archonodes forcipitigerus.</i> | 16 <i>Hypogena tricornis.</i> |
| 17 <i>Stenochia amethystina.</i> | 18 <i>Nemognatha cubicola.</i> | 19 <i>Spermophagus simulator.</i> | 20 <i>Tropideres balteatus.</i> |
| 21 <i>Atelabus scutellatus.</i> | 22 <i>Macromerus clavipes.</i> | 23 <i>Peridinetus signatus.</i> | 24 <i>Prepodes pictus.</i> |
| | | | 25 <i>Prepodes elegans.</i> |



Mignaux et Jac. Duval del.

Clergé sc.

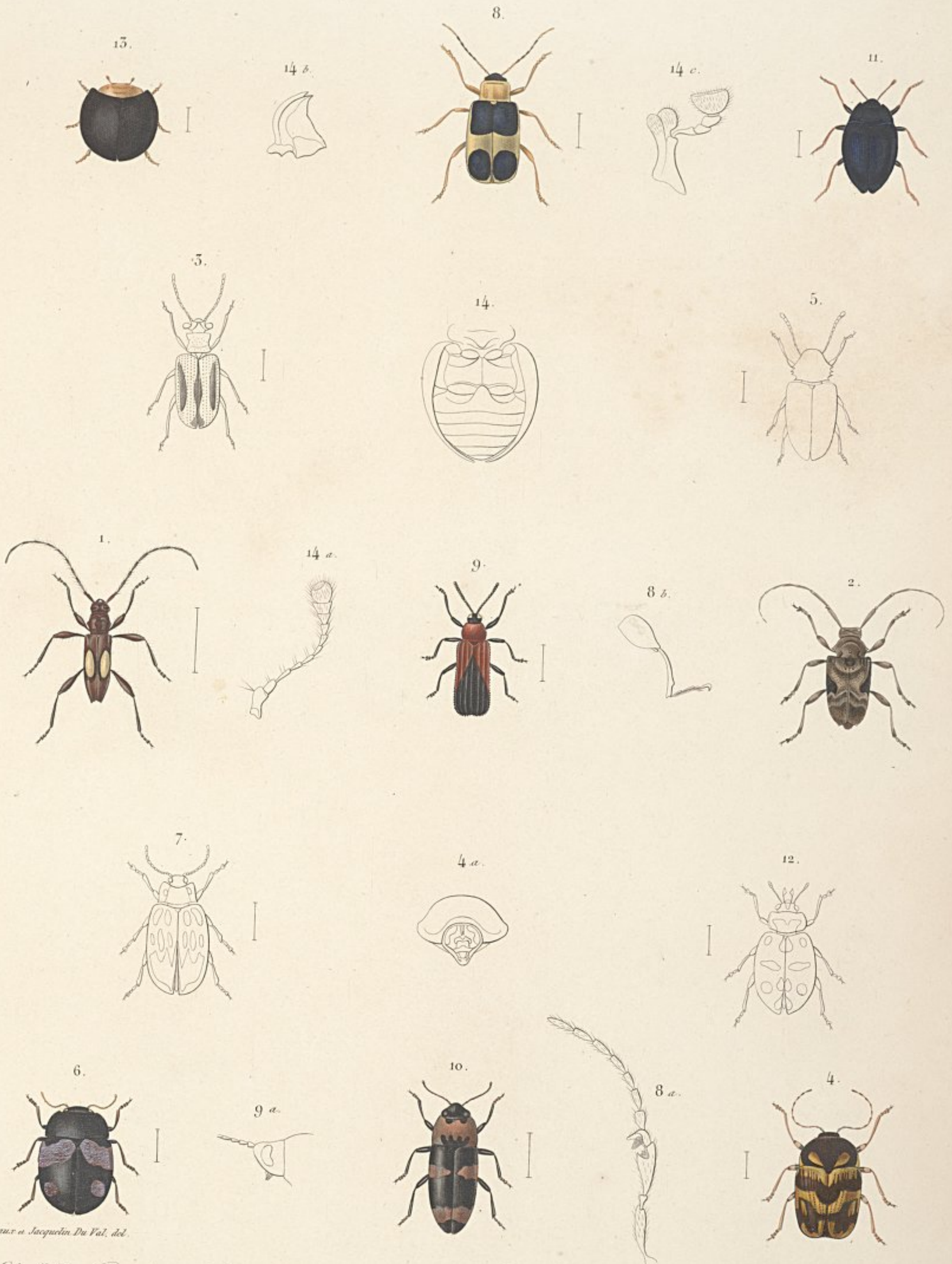
- | | | | | | |
|----|--|----|--------------------------------------|----|----------------------------------|
| 13 | <i>Encarthron taurulus.</i> | 19 | <i>Colobicus rufosulus.</i> | 25 | <i>Aulonium bidentatum.</i> |
| 14 | <i>Trogonita transversicollis.</i> (ant) | 20 | <i>Sphenophorus sericeus.</i> | 26 | <i>Lachnopus Guerinii.</i> |
| 15 | <i>Nematidium costipenne.</i> (ant) | 21 | <i>Rhina oblita.</i> | 27 | <i>Lachnopus argus.</i> |
| 16 | <i>Platypus subcostatus.</i> | 22 | <i>Coracis castaneipennis.</i> (ant) | 28 | <i>Otidoccephalus Poey.</i> |
| 17 | <i>Acalles apicalis.</i> | 23 | <i>Exophthalmus sommeri.</i> | 29 | <i>Baridius quadrimaculatus.</i> |
| 18 | <i>Adelina plana.</i> | 24 | <i>Platypus Poeyi</i> (patte) | 30 | <i>Baridius azureus.</i> |



Mignani et Jac. Duval del.

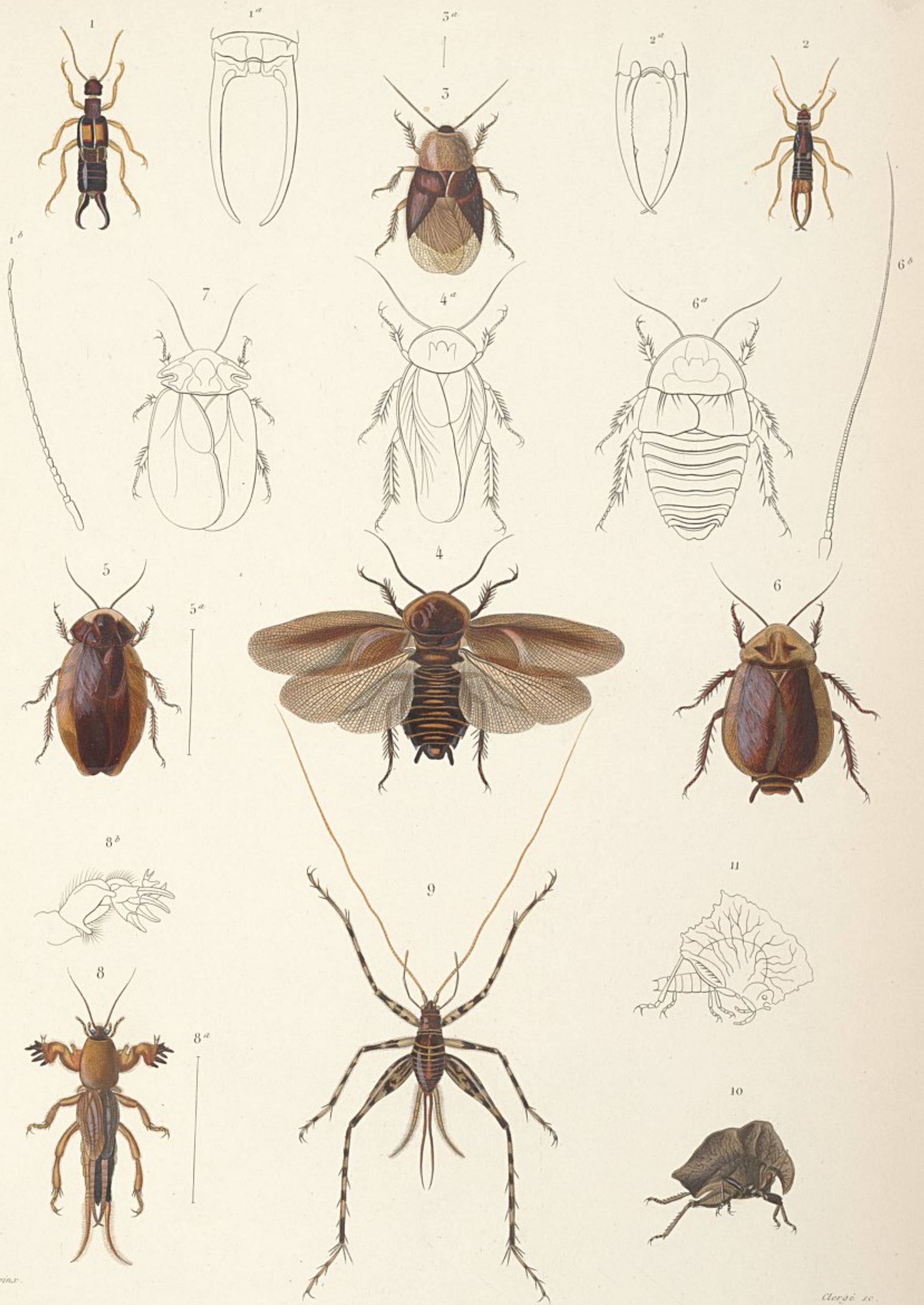
Clergé sc.

- 1 *Solenoptera cinnamipennis*. 2 *Solenopt. lineata*. 3 *Callichroma columbina*. 4 *Eriphas lanicri*. 5 *E. dimidiatipenne*.
 6 *Eburia consobrina*. 7 *Elaphidion virvratum*. 8 *Paciloderma leptaroides*. 9 *Odontocera brachyptera*.
 10 *Probatius umbraticus*. 11 *Anniscus dealbatus*. 12 *Hemilophus venustus*. 13 *Euthuorus filum*.



Mignaux et Jacquin Du Val, del.

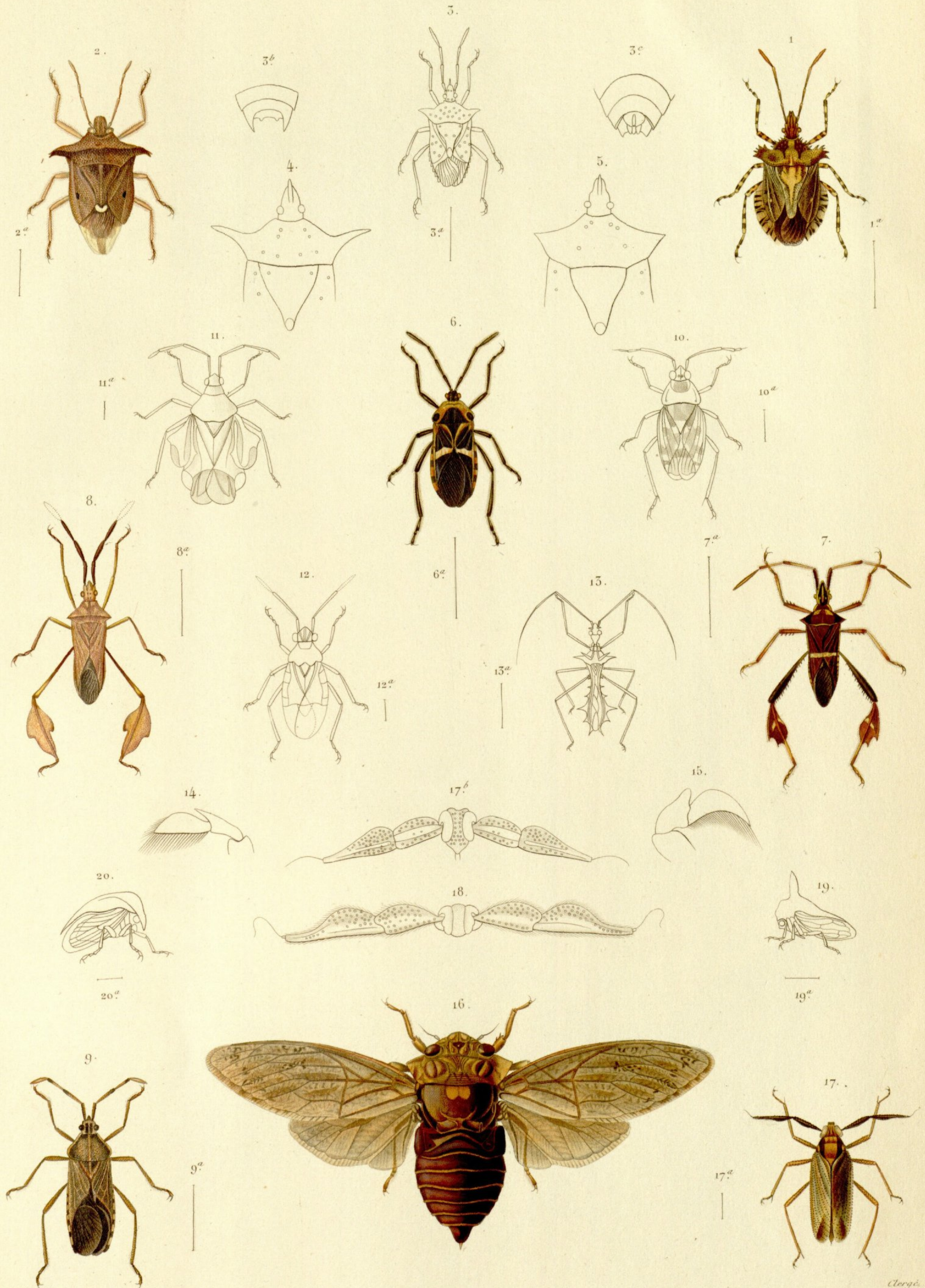
- 1 *Elaphidion Pocyi*. 2 *Acanthoderus aranciformis*. 3 *Lema confusa*. 4 *Cryptocephalus marginicollis*.
 5 *Myochrous dubius*. 6 *Chrysemela Pocyi*. 7 *Lina cruentipennis*. 8 *Phyllobrotica pulchella*.
 8a *Cerotoma denticornis* (Antenne) 8b *Codionychis fasciata* (Patte post.) 9 *Odontata avillaris*. 10 *Ischyris flavitarsis*.
 11 *Coccyanus violaceus*. 12 *Megilla maculata*. 13 *Egius platycephalus*. 14 *Epilachna borealis*. (Détails)



Nicolet pinx.

Clergé sc.

- 1 *Forficula distincta*, Guér. 2 *Forficula affinis*, Guér. 3 *Blatta collaris*, Burm. 4 *Blatta fumigata*, Guér.
 5 *Blatta cicatricosa*, Burm. 6 *Blatta Chambersii*, Guér. 7 *Blatta fipicollis*, Serv. 8 *Gryllotalpa hexadactyla*, Serv.
 9 *Phalangopsis annulipes*, Serv. 10 *Hymenotus Sugrai*, Serv. 11 *Hymenotus rhombica*, Felton.



Nicolet. pinx.

Clergé. sc.

- | | | | |
|---------------------------------------|--|--|---|
| 1 <i>Pentatoma Poeyi</i> , Guér. | 2 <i>Pentatoma Gundlachii</i> , Guér. | 3 <i>Pentatoma punctulata</i> , Palis-Beaux. | 4 <i>Pentatoma</i> , Victor. |
| 5 <i>Pentatoma brevispina</i> , Guér. | 6 <i>Coreus Gundlachii</i> , Guér. | 7 <i>Anisocelis thoracicus</i> , Guér. | 8 <i>Pentalotoma unicolor</i> , Guér. |
| 9 <i>Coreus Andresii</i> , Guér. | 10 <i>Salda Signoretti</i> , Guér. | 11 <i>Heterocoris dilatata</i> , Guér. | 12 <i>Pyrenoderes quadrimaculatus</i> , Guér. |
| 13 <i>Nelus clavatus</i> , Guér. | 14 <i>Palotte du Corisa Rollarii</i> , Guér. | 15 <i>Palotte du Corisa cuba</i> , Guér. | 16 <i>Civada Poeyi</i> , Guér. |
| 17 <i>Holotus thoracicus</i> , Guér. | 18 <i>Holotus obscurus</i> , Guér. | 19 <i>Hoplophora Fairmairei</i> , Guér. | 20 <i>Corisa uniformis</i> , Fairm. |



1. Papilio PIRITHOUS (femelle) 1^{de} id. en dessous.
 2. Papilio ARISTODEMUS (mâle) 2^{de} id. en dessous.
 3. Chenille et Chrysalides du Papilio NEODAMAS.

3.



2.



1.



3^a



2^a



1^a



4.



5^a



4^b



4^a



5^c



4^c



5.



5^d



1. 1^a *Pieris Vallei*, Boisd.

2. 2^a *Pieris Joppe*, Boisd.

3. 3^a *Pieris Elodia*, Hubn.

4. 4^a ♂ 4^b ♀ *Callidryas agarithe*, Boisd.

5. 5^a ♂ 5^b ♀ *Callidryas Neleis*, Boisd.



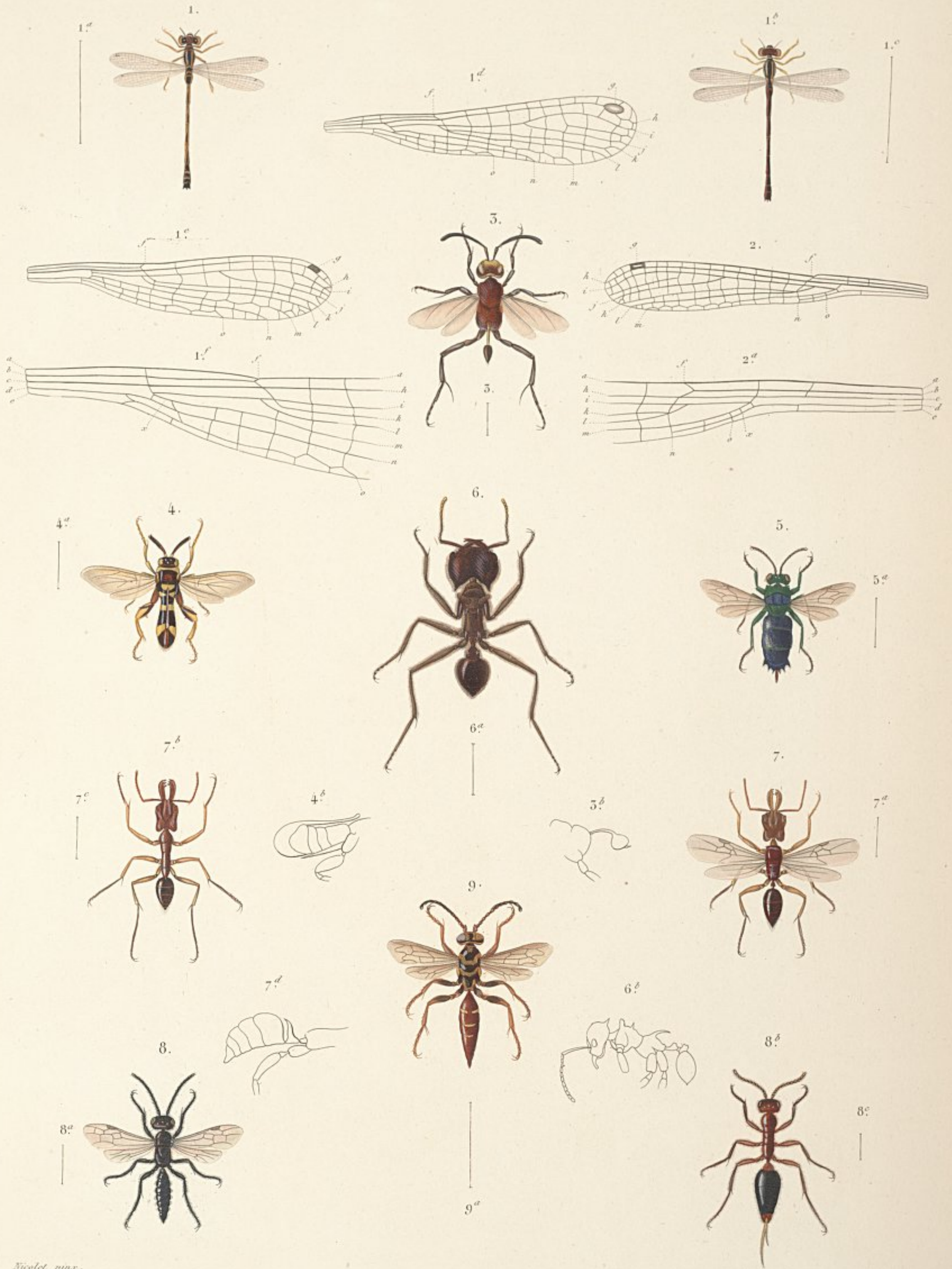
1, 1[♂] *Terias stygmula*, Bois. 2, 2[♂] *Terias Westwoodii*, Bois. 3, 3[♂] *Terias Gnathene*, Bois. 5, 5[♀] *Terias Arabella*, Lefebv.
 4, 4[♀] *Apatura Theodora*, Lefebv. 6, 6[♂], 6[♀] *Thecla Aon*, Lefebv. 7, 7[♂], 7[♀] *Lycæna Ammon*, Lefebv. 8, 8[♂], 8[♀] *Lycæna Theonus*, Lefebv.



Nicolet pine.

Clergé se.

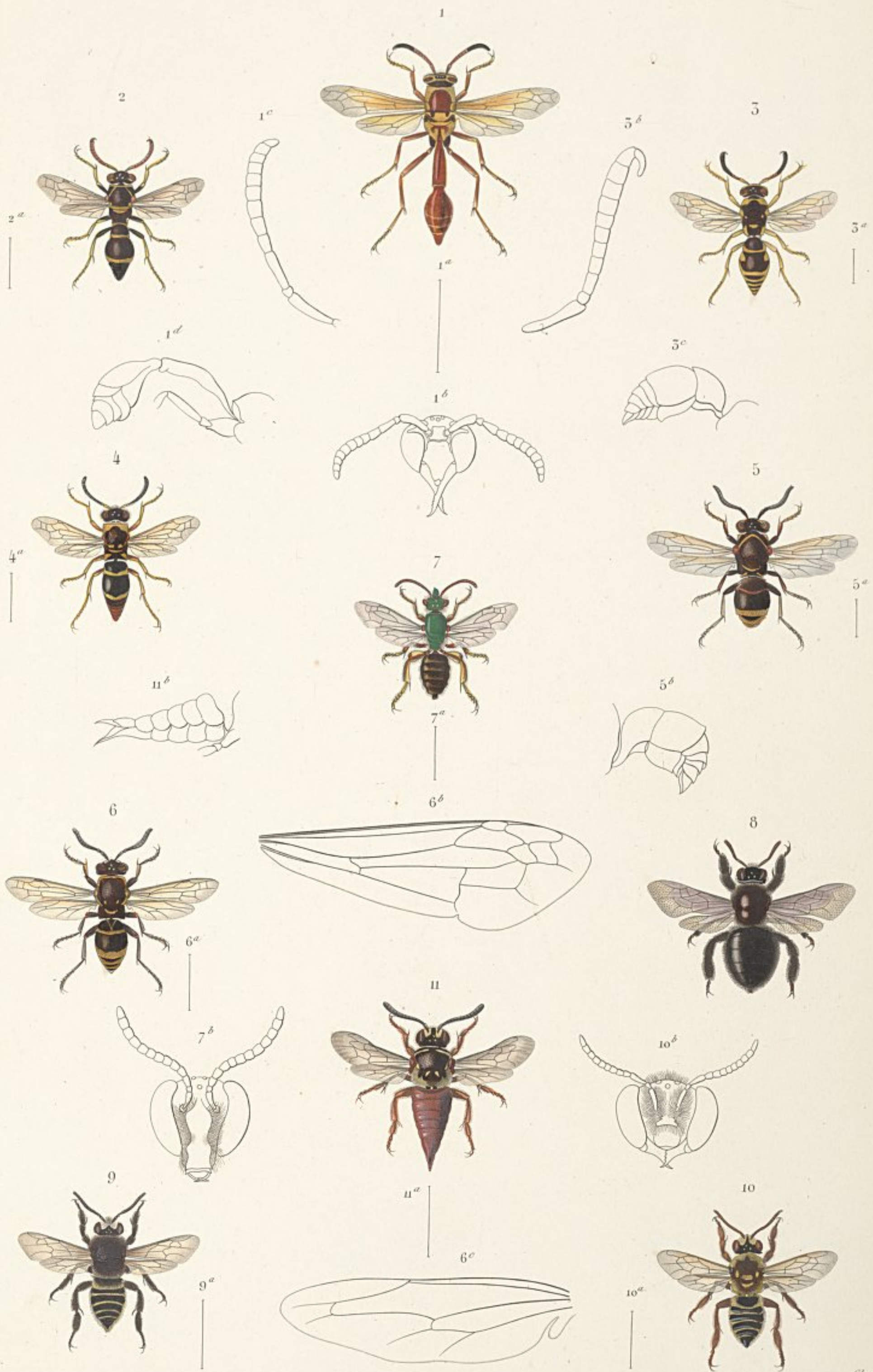
1, 1^a *Cydimon Boisduvalii*, Guér. 2 *Callionime Parce*, Fabr. 3 *Philampelus Labruscæ*, Linn.
 4 *Philampelus vitis*, Cram. 5 *Philampelus fasciatus*, Sals. 6 *Oiketicus Poeyi*, Luc.



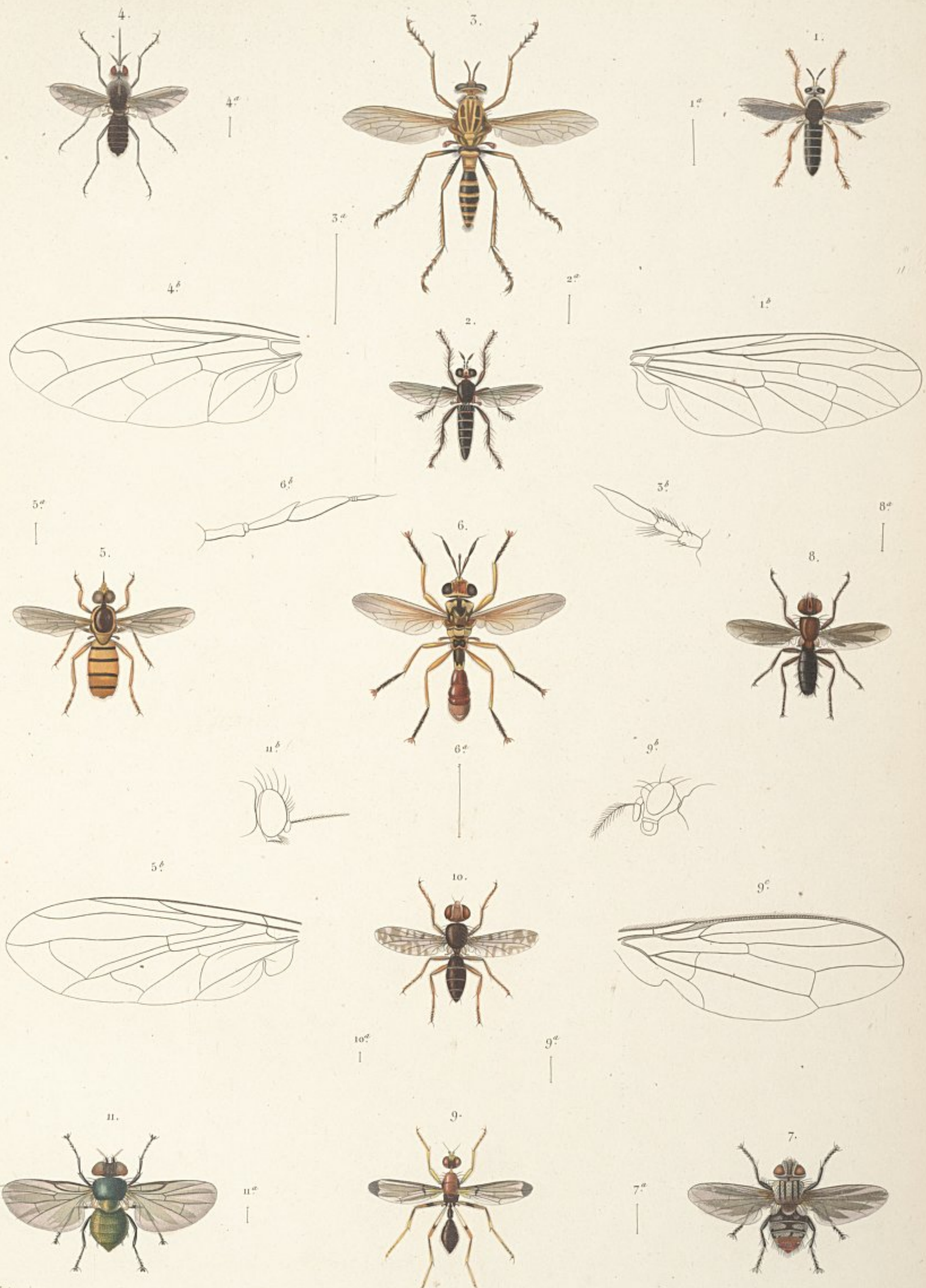
Nicolet pinx.

Clergé sc.

1 ♂ 1^b ♀ *Agrion hastatum*, Say. 2, 2^a *Ailes grossies du Protonevra capillaris*, Ramb. 3 *Evania Poeyi*, Guér.
 4 *Leucospis Poeyi*, Guér. 5 *Chrysis insularis*, Guér. 6 *Atta insularis*, Guér. 7, 7^b *Odontomachus insularis*, Guér.
 8, 8^b *Methoca Poeyi*, Guér. 9 *Lyrops fulviventris*, Guér.



1 *Eumenes colona*, de Sauss. 2 *Odynerus incommodus*, de Sauss. 3 *Odynerus Bacu.*, de Sauss. 4 *Odynerus cubensis*, de Sauss.
 5 *Odynerus simplicicornis*, de Sauss. 6 *Odynerus brachygaster*, de Sauss. 7 *Andrena femoralis*, Guer. 8 *Dylocopa cubacola*, Lucas.
 9 *Megachile binotata* ♀, Guer. 10 *Megachile Pocyi* ♀, Guer. 11 *Colletes abdominalis* ♀, Guer.



Nicolet. pinx.

Clergé. sc.

- | | | | |
|---|-------------------------------------|---------------------------------------|---------------------------------------|
| 1 <i>Atomosia similis</i> , Bigot. | 2 <i>Dasyprogon parvum</i> , Bigot. | 3 <i>Senobasis annulatus</i> , Bigot. | 4 <i>Bombylius insularis</i> , Bigot. |
| 5 <i>Syrphus quadrifasciatus</i> , Bigot. | 6 <i>Conops Ramondi</i> , Bigot. | 7 <i>Tachina elegans</i> , Bigot. | 8 <i>Scopelia nigra</i> , Bigot. |
| 9 <i>Sepsis Guerinii</i> , Bigot. | 10 <i>Acinia picciola</i> , Bigot. | 11 <i>Ulidia metallica</i> , Bigot. | |