

NOTES ON A SMALL COLLECTION OF AMPHIPODS  
FROM THE PRIBILOF ISLANDS, WITH  
DESCRIPTIONS OF NEW SPECIES

BY

A. S. PEARSE

Of the University of Wisconsin, Madison, Wisconsin

---

No. 1998.—From the Proceedings of the United States National Museum,  
Vol. 45, pages 571-573

Published June 4, 1913



Washington  
Government Printing Office

1913

NOTES ON A SMALL COLLECTION OF AMPHIPODS FROM  
THE PRIBILOF ISLANDS, WITH DESCRIPTIONS OF NEW  
SPECIES.

---

By A. S. PEARSE,  
*Of the University of Wisconsin, Madison, Wisconsin.*

---

The following notes pertain to a small collection made at St. Paul Island, Pribilof Islands, by Mr. M. C. Marsh and Mr. W. L. Hahn of the United States Bureau of Fisheries.

**ALLORCHESTES MALLEOLUS** Stebbing.

This species was apparently abundant in the skeletonizing box at the village landing, and collections were made on November 30 and December 12, 1911. The color in life was brown or reddish-brown. These specimens are larger (22 mm.) than the total length given by Stebbing for the species (7 mm.). The flagellum of the first antenna is 22-segmented; that of the second 18-segmented. The last three peræon and the first four pleon segments are carinate dorsally.

**GAMMARUS LOCUSTA** (Linnæus).

About 25 specimens were taken from the skeletonizing box at the village landing, December 12, 1911. Color in life, blue or bluish-black. Length, 17 mm.

**GAMMARUS PRIBILOFENSIS**, new species.

Head with lateral lobes rounded. Side plates 1-3 rather deep; nearly as broad as deep. Pleon segments 2 and 3, posterior angles produced and armed with a seta. Pleon segment 4 with a row of about 12 spinules along posterior dorsal margin; pleon segment 5 with one strong acute posterior median dorsal spine; pleon segment 6 with one submedian and three lateral spines (total 8) on each side of the posterior margin.

Eyes plump, small, somewhat reniform, black. Antenna 1 not half as long as body; first segment about as long as second and third combined; flagellum one and one-half times as long as peduncle,

13-segmented; accessory flagellum, 5-segmented. Antenna 2 about as long as antenna 1; flagellum about as long as peduncle. Gnathopod 1 in male with palm somewhat oblique, larger than gnathopod 2, in which the palm is transverse. Uropod 3 elongate, rami fringed with plumose setæ and spines; inner ramus three-fourths as long as first segment of outer ramus; second segment of outer ramus, small. Telson cleft to base, with three pairs of spines along outer margins and a seta near tip. Length, 9 mm.

*Type-locality*.—St. Paul, Pribilof Islands; from skeletonizing box. November 30, 1911.

*Type*.—Cat. No. 45710, U.S.N.M.

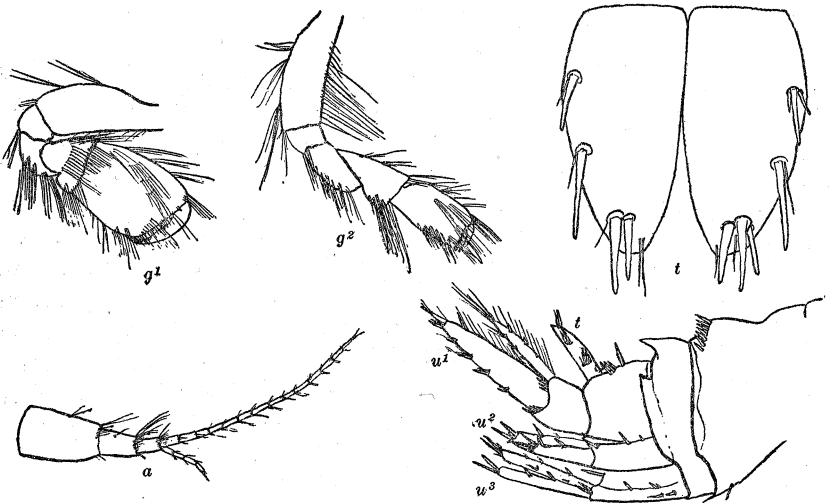


FIG. 1.—GAMMARUS PRIBILOFENSIS. *a*, FIRST ANTENNA; *g*<sup>1</sup>, FIRST GNATHOPOD; *g*<sup>2</sup>, SECOND GNATHOPOD; *t*, TELSON; *u*<sup>1</sup>, *u*<sup>2</sup>, *u*<sup>3</sup>, UROPODS.

**CHIRONESIMUS MULTIARTICULATUS**, new species.

Body robust, back broadly rounded. Cephalon about the length of the first body segment, lateral corners produced and rounded. Anterior coxal plates twice as deep as the body; first pair slightly expanded below, rounded at anterior angle; fourth pair deeply emarginated posteriorly and forming a rather angular expansion below; fifth pair small, longer than deep. Third epimeral plates of abdomen produced at posterior angles and somewhat upturned.

Eyes oval, broader below, constricted in the middle. First antennæ as long as cephalon and first two body segments combined; first segment of peduncle very large and thick; flagellum more than twice as long as peduncle, 28–30-segmented; 18-segmented in female; accessory flagellum about as long as peduncle, 8-segmented in male, 7-segmented in female. Second antennæ usually folded under body,

more than twice as long as first, flagellum 60-segmented. First gnathopods with propodus one-third longer than carpus and nearly as wide, palm defined by a tooth. Second gnathopods with propodus nearly half the length of carpus, oblong-oval, not dilated distally, dactyl minute. Posterior peræopods about as long as fourth pair, basal segment large, meral segment expanded. Third uropoda reach beyond the end of the second pair; inner ramus little shorter than outer. Telson nearly twice as long as broad; cleft beyond middle; terminal lobes blunt, each with a spine and a seta. Said to have more or less pink on back when alive; eyes black in alcohol. Length, 22 mm.

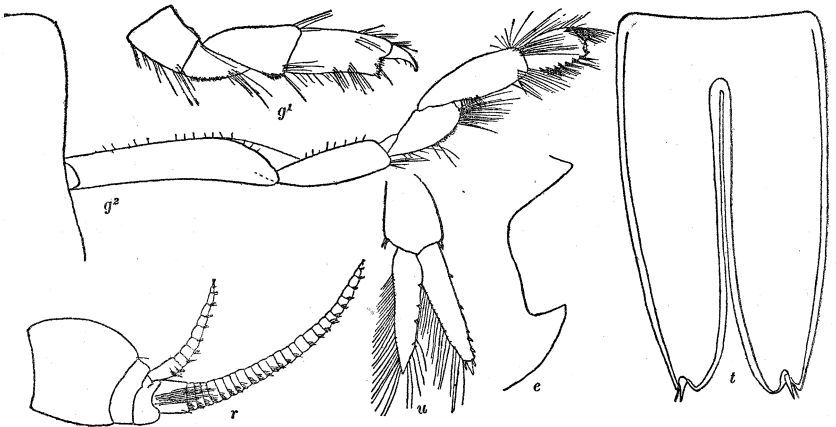


FIG. 2.—*CHIRONESIMUS MULTIARTICULATUS*. *e*, THIRD ABDOMINAL EPIMERITE; *g¹*, FIRST GNATHOPOD; *g²*, SECOND GNATHOPOD; *r*, FIRST ANTENNA; *t*, TELSON; *u*, THIRD UROPOD.

Forty-seven specimens were taken from a skeletonizing box November 23, 1911, at the village landing, St. Paul, Pribilof Islands. The types are among these. Other collections were made on November 20, 1911, and May 5, 1912, at the same place.

*Type*.—Cat. No. 45711, U.S.N.M.

**PONTOGENEIA INERMIS (Krøyer).**

Two collections of this species were made from the skeletonizing box, March 7 and November 30, 1911. All specimens were females; two on the latter date carrying eggs. The gnathopods are rather robust; otherwise the specimens examined agree with Sars's<sup>1</sup> figures.

<sup>1</sup> G. O. Sars, *The Crustacea of Norway*, vol. 1, 1895, pl. 159.