

AN ACCOUNT  
OF THE  
**CRUSTACEA**  
OF  
**NORWAY**

WITH SHORT DESCRIPTIONS AND FIGURES OF ALL THE SPECIES

BY  
G. O. SARS

VOL. V  
**COPEPODA**  
**HARPACTICOIDA**

PARTS XXXV & XXXVI  
SUPPLEMENT (concluded), INDEX etc.

WITH 12 AUTOGRAPHIC PLATES



**BERGEN**  
PUBLISHED BY THE BERGEN MUSEUM

SOLD BY  
ALB. CAMMERMEYER'S FORLAG, CHRISTIANIA  
1911

# INDEX.

	Page		Page
<i>Achirota</i> .....	4	<i>amblyops</i> .....	384
<i>Alcutha</i> .....	61	<i>attenuatus</i> .....	171
<i>bopyroides</i> .....	62	<i>Blanchardi</i> .....	379
<i>depressa</i> .....	64	<i>bulbifer</i> .....	387
<i>interrupta</i> .....	62	<i>cinctus</i> .....	149
<i>norvegica</i> .....	62	<i>confusus</i> .....	389
<i>porpurocinata</i> .....	64, 365	<i>debilis</i> .....	162
<i>Ameira</i> .....	214	<i>denticulatus</i> .....	382
<i>ambigua</i> .....	216	<i>exiguus</i> .....	174
<i>amphibia</i> .....	212	<i>Giesbrechti</i> .....	157
<i>attenuata</i> .....	397	<i>hispidus</i> .....	166, 378
<i>exilis</i> .....	404	<i>imms</i> .....	156, 378
<i>longicaudata</i> .....	228, 405	<i>intermedius</i> .....	169, 379
<i>longipes</i> .....	215	<i>lagenirostris</i> .....	385
<i>longiremis</i> .....	222	<i>lamellifer</i> .....	391
<i>minuta</i> .....	216	<i>latifolius</i> .....	379
<i>parva</i> .....	222	<i>linearis</i> .....	177
<i>propinqua</i> .....	399	<i>longirostris</i> .....	159
<i>reflexa</i> .....	400	<i>minutus</i> .....	154, 378
<i>Scotti</i> .....	397	<i>nanoides</i> .....	386
<i>simplex</i> .....	219	<i>nanus</i> .....	173
<i>tau</i> .....	218, 397	<i>nasutus</i> .....	153
<i>tenella</i> .....	220	<i>Normani</i> .....	389
<i>tenicornis</i> .....	(217) 397	<i>obseurus</i> .....	150
<i>Ameiropsis</i> .....	223	<i>pallidus</i> .....	164
<i>abbreviata</i> .....	404	<i>parvus</i> .....	162
<i>angulifera</i> .....	403	<i>phyllopus</i> .....	172
<i>brevicornis</i> .....	224	<i>productus</i> .....	175, 379
<i>longicornis</i> .....	225	<i>propinquus</i> .....	158
<i>mixta</i> .....	226	<i>similis</i> .....	151
<i>nobilis</i> .....	402	<i>simulans</i> .....	442
<i>Amenophia</i> .....	135	<i>sinuatus</i> .....	178
<i>peltata</i> .....	136, 376	<i>spinulosus</i> .....	388
<i>pulchella</i> .....	138	<i>tenellus</i> .....	176
<i>Anphiaseus</i> .....	148	<i>tremiremis</i> .....	161
<i>abyssi</i> .....	165	<i>thalestroides</i> .....	381
<i>affinis</i> .....	168, 379	<i>typhloides</i> .....	390
		<i>typhlops</i> .....	170, 379
		<i>varians</i> .....	378
		<i>Amygone</i> .....	68
		<i>falcata</i> .....	69
		<i>harpactoides</i> .....	365
		<i>longimana</i> .....	(70) 367
		<i>nigraus</i> .....	73
		<i>rubra</i> .....	69
		<i>sphaerica</i> .....	69, 73
		<i>Anchorabolidæ</i> .....	311
		<i>Anchorabolus</i> .....	312
		<i>nirabilis</i> .....	312
		<i>Anoplosoma</i> .....	431
		<i>sordidum</i> .....	432
		<i>Argestes</i> .....	342
		<i>mollis</i> .....	343
		<i>Arpacticus</i> .....	49
		<i>nobilis</i> .....	140
		<i>Arthropstylus</i> .....	318
		<i>servatus</i> .....	318
		<i>Asellopsis</i> .....	267
		<i>hispidus</i> .....	268
		<i>Aspidiscus</i> .....	78
		<i>fasciatus</i> .....	81
		<i>littoralis</i> .....	79
		<i>Artheyella</i> .....	199
		<i>arctica</i> .....	203
		<i>crassa</i> .....	199
		<i>cryptorum</i> .....	202
		<i>Duthiei</i> .....	204
		<i>gracilis</i> .....	201
		<i>pygmaea</i> .....	202
		<i>spinosa</i> .....	199
		<i>Balenophilida</i> .....	346
		<i>Balenophilus</i> .....	347
		<i>uiselis</i> .....	347
		<i>Beatricella</i> .....	180

	Page		Page		Page
<i>mimica</i> .....	181	<i>similis</i> .....	244	<i>rulgaris</i> .....	128, 370
<i>Bradya</i> .....	45	<i>Cetodes</i> .....	281	<i>Danielssenia</i> .....	336
<i>armifera</i> .....	360	<i>Buchholtzi</i> .....	287	<i>fusiformis</i> .....	338
<i>dilatata</i> .....	47	<i>curvirostris</i> .....	285	<i>typica</i> .....	336
<i>elegans</i> .....	359	<i>hirsutipes</i> .....	298	<i>D'Arcythompsonia</i> .....	325
<i>fusca</i> .....	357	<i>irrasa</i> .....	291	<i>fairliensis</i> .....	325
<i>hirsuta</i> .....	356	<i>lata</i> .....	294	<i>Delavalia</i> .....	180
<i>minor</i> .....	41	<i>laticauda</i> .....	293	<i>Giesbrechti</i> .....	188
<i>similis</i> .....	42	<i>limicola</i> .....	283	<i>mimica</i> .....	181
<i>typica</i> .....	46, 360	<i>linearis</i> .....	289	<i>minutissima</i> .....	190
<i>Canthocomptula</i> .....	193	<i>longicaulatus</i> .....	286	<i>Normani</i> .....	189
<i>Canthocomptus</i> .....	194	<i>neglecta</i> .....	286	<i>palustris</i> .....	185
<i>arcticus</i> .....	203	<i>propinqua</i> .....	300	<i>reflexa</i> .....	186
<i>Borchersdingi</i> .....	202	<i>similis</i> .....	295	<i>aemula</i> .....	184
<i>crassus</i> .....	199	<i>tenipes</i> .....	284	<i>Diosaccida</i> .....	144
<i>Duthiei</i> .....	204	<i>Cetodula</i> .....	281	<i>Diosaccus</i> .....	145
<i>furcatus</i> .....	88	<i>Cyclops chelifer</i> .....	49	<i>abyssi</i> .....	154
<i>gracilis</i> .....	201, 206	<i>Cylindropsyllide</i> .....	320	<i>longirostris</i> .....	159
<i>hirticornis</i> .....	210	<i>Cylindropsyllus</i> .....	320	<i>tenicornis</i> .....	146
<i>inornatus</i> .....	201	<i>fairliensis</i> .....	325	<i>Echinopsyllus</i> .....	314
<i>lucidulus</i> .....	197	<i>lavis</i> .....	321	<i>Normani</i> .....	314
<i>megadops</i> .....	210	<i>minor</i> .....	434	<i>Ectinosoma</i> .....	29
<i>minuticornis</i> .....	34	<i>Cylindrosoma</i> .....	320	<i>armiferum</i> .....	360
<i>minutus</i> .....	195, 197	<i>Dactylopoda</i> .....	43	<i>atlanticum</i> .....	44
<i>palustris</i> .....	212	<i>Dactylopodella</i> .....	131	<i>brevirostre</i> .....	38
var. <i>elongata</i> .....	213	<i>clypcata</i> .....	373	<i>curticorne</i> .....	36, 355
<i>parvus</i> .....	209	<i>flava</i> .....	132	<i>elongatum</i> .....	32
<i>pygmaeus</i> .....	202	<i>Dactylopodopsis</i> .....	371	<i>finnarchienn</i> .....	32
<i>stephelinus</i> .....	195	<i>dilatata</i> .....	372	<i>gothicps</i> .....	37, 356
<i>Strömi</i> .....	208, 251	<i>Dactylopus</i> .....	125	<i>gracile</i> .....	39
<i>Canthocarpus</i> .....	194	<i>abyssi</i> .....	125	<i>Herdmanni</i> .....	33
<i>Canuella</i> .....	16	<i>brevicornis</i> .....	130	<i>melaniceps</i> .....	34, 355
<i>furcigera</i> .....	18	<i>cinctus</i> .....	149	<i>mixtum</i> .....	37
<i>perplexa</i> .....	17, 350	<i>coronatus</i> .....	375	<i>neglectum</i> .....	31, 355
<i>Carillus</i> .....	61	<i>debilis</i> .....	162	<i>Normani</i> .....	35, 355
<i>oblongus</i> .....	64	<i>flavus</i> .....	132, 134	<i>propinquum</i> .....	32, 355
<i>Ceratometus</i> .....	316	<i>longirostris</i> .....	154	<i>pygmaeum</i> .....	37
<i>pectinatus</i> .....	316	<i>minutus</i> .....	154	<i>Sarsi</i> .....	30
<i>Cerebia</i> .....	19	<i>nasutus</i> .....	153	<i>spinipes</i> .....	30
<i>Bradyl</i> .....	20, 351	<i>parvus</i> .....	162	<i>tenireme</i> .....	438
<i>spurthra</i> .....	(20) 351	<i>pygmaeus</i> .....	209	<i>Ectinosomida</i> .....	28
<i>Cerviniida</i> .....	19	<i>similis</i> .....	151	<i>Enhydrosoma</i> .....	297
<i>Cerviniopsis</i> .....	22	<i>Strömi</i> .....	158	<i>curticaudatum</i> .....	298
<i>clavicornis</i> .....	22	<i>tenicornis</i> .....	146	<i>curvatum</i> .....	303
<i>longicaudata</i> .....	23	<i>teniremis</i> .....	161	<i>gracile</i> .....	430
<i>Chirognatha</i> .....	47	<i>thisboides</i> .....	126	<i>longicaudata</i> .....	286
<i>Cleta</i> .....	234	<i>Dactylopusia</i> .....	125	<i>longifurcatum</i> .....	301
<i>brevirostris</i> .....	256	<i>brevicornis</i> .....	130	<i>propinquum</i> .....	300
<i>foreipata</i> .....	235	<i>latipes</i> .....	370	<i>Escamella</i> .....	24
<i>humellifera</i> .....	266	<i>micronyx</i> .....	129, 370	<i>spinifera</i> .....	25, 352
<i>minuticornis</i> .....	246	<i>neglecta</i> .....	127	<i>Eurycletodes</i> .....	292
<i>serrata</i> .....	237	<i>thisboides</i> .....	126	<i>laticaudatus</i> .....	293



	Page		Page		Page
<i>latus</i> .....	294	<i>pusilla</i> .....	99	<i>Leptomsochra</i> .....	418
<i>major</i> .....	296	Ilyophilus .....	306	<i>attenuata</i> .....	419
<i>similis</i> .....	295	<i>flexibilis</i> .....	307	<i>confuens</i> .....	421
<i>Eransia</i> .....	414	Ilyopsyllus .....	343	<i>tenicornis</i> .....	421
<i>incerta</i> .....	415	<i>coriaceus</i> .....	345	Leptopsyllus .....	425
<i>Fultonia</i> .....	340	Jonesiella .....	336	<i>intermedius</i> .....	425
<i>hirsuta</i> .....	340	<i>fusiformis</i> .....	338	Lilljeborgia .....	288
<i>Halithalestris</i> .....	117	<i>spinulosa</i> .....	336	<i>linearis</i> .....	289
<i>Croni</i> .....	118	<i>Laophonte</i> .....	224	<i>Longipedia</i> .....	9
<i>Harpacticidae</i> .....	48	<i>affinis</i> .....	244	<i>coronata</i> .....	10, 11, 17
<i>Harpacticus</i> .....	49	<i>brevirostris</i> .....	256	<i>minor</i> .....	12, 350
<i>arcticus</i> .....	51	<i>brevispinosa</i> .....	247	<i>rosea</i> .....	13
<i>chelifer</i> .....	49, 363	<i>congenera</i> .....	257	<i>Scotti</i> .....	11
<i>crassicornis</i> .....	54	<i>cornuta</i> .....	235	<i>Longipediidae</i> .....	8
<i>Croni</i> .....	118	<i>curticauda</i> .....	252	Longipediina .....	14
<i>enrticornis</i> .....	54	<i>denticornis</i> .....	264	<i>paguri</i> .....	15
<i>elongatus</i> .....	52	<i>depressa</i> .....	239	<i>Macheiropus</i> .....	84
<i>flexus</i> .....	53	<i>elongata</i> .....	241	<i>idyoides</i> .....	85
<i>fortificationis</i> .....	235	<i>Herdmanni</i> .....	255	<i>minutus</i> .....	86
<i>fulvus</i> .....	54	<i>Hodgei</i> .....	243	<i>Malacopsyllus</i> .....	407
<i>gibbus</i> .....	105	<i>horrida</i> .....	246	<i>fragilis</i> .....	407
<i>gracilis</i> .....	52	<i>inopinata</i> .....	263	<i>Mesochra</i> .....	207
<i>littoralis</i> .....	363	<i>karmensis</i> .....	426	<i>exigua</i> .....	395
<i>nordlandicus</i> .....	51	<i>Koreni</i> .....	248	<i>hirticornis</i> .....	210
<i>uniremis</i> .....	51, 363	<i>littoralis</i> .....	255	<i>Lilljeborgi</i> .....	208
<i>Huntemannia</i> .....	304	<i>longicaudata</i> .....	243	<i>Macintoshi</i> .....	419
<i>jahdensis</i> .....	305	<i>longiremis</i> .....	243	<i>propinqua</i> .....	423
<i>Idomene</i> .....	133	<i>macera</i> .....	259	<i>pygmaea</i> .....	209, 394
<i>borealis</i> .....	374	<i>minuta</i> .....	253	<i>spinicauda</i> .....	417
<i>coronata</i> .....	375	<i>nana</i> .....	262	<i>Mesocletores</i> .....	290
<i>forficata</i> .....	134	<i>Nordgaardi</i> .....	260	<i>irrasus</i> .....	291
<i>Idomenella</i> .....	375	<i>parrula</i> .....	261	<i>Metidae</i> .....	344
<i>coronata</i> .....	375	<i>perplexa</i> .....	258	<i>Metis</i> .....	344
<i>Idya</i> .....	87	<i>propinqua</i> .....	237	<i>ignea</i> .....	345
<i>angusta</i> .....	85	<i>proxima</i> .....	250	<i>Microsetella</i> .....	43
<i>barbigera</i> .....	88	<i>serrata</i> .....	235, 237	<i>norvegica</i> .....	44
<i>elegantula</i> .....	93	<i>setosa</i> .....	244	<i>Microthalestris</i> .....	122
<i>ensifera</i> .....	90, 367	<i>similis</i> .....	244	<i>forficula</i> .....	123
<i>finmarchica</i> .....	96, 368	<i>spinosa</i> .....	428	<i>littoralis</i> .....	369
<i>furcata</i> .....	88	<i>Strömi</i> .....	251	<i>Misophria</i> .....	5
<i>gracilis</i> .....	94, 368	<i>thoracica</i> .....	240	<i>pallida</i> .....	6, 350
<i>longicornis</i> .....	92	<i>typhlops</i> .....	242	<i>Misophriidae</i> .....	4
<i>minor</i> .....	90	<i>Laophontidae</i> .....	234	<i>Monoculus staphylinus</i> .....	195
<i>tenera</i> .....	91	<i>Laophontina</i> .....	427	<i>Moraia</i> .....	205
<i>Idyrea</i> .....	367	<i>Laophontodes</i> .....	269	<i>Anderson-Smithi</i> .....	206
<i>tenella</i> .....	368	<i>bicornis</i> .....	271	<i>breripes</i> .....	206
<i>Idyanthe</i> .....	369	<i>expansus</i> .....	273	<i>Namopsis</i> .....	306
<i>Idyella</i> .....	99	<i>typicus</i> .....	270	<i>palustris</i> .....	307
<i>erigua</i> .....	101	<i>Laophontopsis</i> .....	265	<i>Nauplius</i> .....	125
<i>pallidula</i> .....	100	<i>lanellifera</i> .....	266	<i>Neobradya</i> .....	439
<i>Idyopsis</i> .....	97	<i>Leptastacus</i> .....	416	<i>pectinifera</i> .....	440
<i>dilatata</i> .....	98	<i>macronyx</i> .....	417	<i>Nitocra</i> .....	211

	Page		Page		Page
<i>oligochaeta</i> .....	212	<i>Parcellidium</i> .....	75	<i>Giesbrechti</i> .....	188
<i>pusilla</i> .....	396	<i>fasciatum</i> .....	76	<i>hispida</i> .....	168
<i>spinipes</i> .....	213	<i>fimbriatum</i> .....	76	<i>ima</i> .....	156, 157
<i>typica</i> .....	212	<i>sabrotundum</i> .....	76	<i>intermedia</i> .....	169
<i>Normanella</i> .....	277	<i>viride</i> .....	76	<i>longicaudata</i> .....	190
<i>attenuata</i> .....	419	<i>Psamathe</i> .....	82	<i>longirostris</i> .....	383
<i>dubia</i> .....	278	<i>longicauda</i> .....	83	<i>Normani</i> .....	189
<i>minuta</i> .....	278	<i>Psammis</i> .....	339	<i>palustris</i> .....	185, 392
<i>micromata</i> .....	280	<i>longisetosa</i> .....	339	<i>proxima</i> .....	183
<i>tenuifurca</i> .....	280	<i>Pseudam ira</i> .....	400	<i>reflexa</i> .....	186
<i>Ophioeumptus</i> .....	205	<i>crassicornis</i> .....	400	<i>simulans</i> .....	442
<i>Sarsii</i> .....	206	<i>furcata</i> .....	401	<i>varians</i> .....	378
<i>Oniscidium</i> .....	65	<i>Pseudobradya</i> .....	40	<i>Stenohelopsis</i> .....	191, 392
<i>armatum</i> .....	66	<i>acuta</i> .....	41	<i>divaricata</i> .....	192
<i>Oethopsyllus</i> .....	288	<i>elegans</i> .....	359	<i>latifurca</i> .....	392
<i>linearis</i> .....	289	<i>fusca</i> .....	357	<i>media</i> .....	394
<i>Parameira</i> .....	221	<i>hirsuta</i> .....	356	<i>Stenocaris</i> .....	323
<i>major</i> .....	223	<i>minor</i> .....	41, 356	<i>gracilis</i> .....	323
<i>parva</i> .....	222	<i>robusta</i> .....	358	<i>minor</i> .....	434
<i>propinqua</i> .....	399	<i>similis</i> .....	42	<i>Stenocopia</i> .....	227
<i>Paramesochera</i> .....	424	<i>Pseudolaophonte</i> .....	427	<i>longicaudata</i> .....	228
<i>dubia</i> .....	425	<i>aculeata</i> .....	428	<i>setosa</i> .....	229
<i>Paratachidium</i> .....	207	<i>spinosa</i> .....	428	<i>spinosa</i> .....	405
<i>gracilis</i> .....	208	<i>Pseudotachidium</i> .....	330	<i>Smaristes</i> .....	14
<i>incornis</i> .....	199	<i>coronatus</i> .....	336	<i>paywii</i> .....	15, 350
<i>Parategastes</i> .....	72	<i>Pseudothalestris</i> .....	139	<i>Supplement</i> .....	350
<i>sphaericus</i> .....	73	<i>major</i> .....	142	<i>Tachidiella</i> .....	332
<i>Parathalestris</i> .....	110	<i>monensis</i> .....	377	<i>minuta</i> .....	332
<i>Clausi</i> .....	111	<i>pygmaea</i> .....	143	<i>Tachidiidae</i> .....	327
<i>harpacticoides</i> .....	112	<i>Pseudowestwoodia</i> .....	139	<i>Tachidiopsis</i> .....	434
<i>hibernica</i> .....	113	<i>pygmaea</i> .....	143	<i>cyclopoides</i> .....	435
<i>Jacksoni</i> .....	114	<i>Pteropsyllus</i> .....	412	<i>Tachidius</i> .....	328
<i>Peltidiella</i> .....	61	<i>consimilis</i> .....	413	<i>brevicornis</i> .....	328
<i>Peltidium</i> .....	61, 65	<i>Reticulina</i> .....	65	<i>disripes</i> .....	328
<i>conophorum</i> .....	62	<i>Rhizothrix</i> .....	302	<i>Tegastes</i> .....	68
<i>fimbriatum</i> .....	76	<i>curvata</i> .....	303	<i>calcaratus</i> .....	366
<i>interruptum</i> .....	62	<i>gracilis</i> .....	430	<i>Clausi</i> .....	365
<i>parvum</i> .....	64, 66	<i>Rhynchothalestris</i> .....	169	<i>falcatus</i> .....	69
<i>Phyllocomptus</i> .....	422	<i>helgolandica</i> .....	121, 369	<i>flavidus</i> .....	70
<i>fairliensis</i> .....	423	<i>rufocincta</i> .....	120	<i>grandimanus</i> .....	71
<i>minutus</i> .....	423	<i>Robertsonia</i> .....	334	<i>harpacticoides</i> .....	365
<i>Phyllopodopsyllus</i> .....	230	<i>tenuis</i> .....	334	<i>longimanus</i> .....	(70) 367
<i>Bradyi</i> .....	231, 409	<i>Scutellidium</i> .....	78, 82	<i>nemus</i> .....	72
<i>furciger</i> .....	233	<i>fasciatum</i> .....	79	<i>Tetragoniceps</i> .....	410
<i>Phyllothalestris</i> .....	115	<i>thisboides</i> .....	83	<i>Bradyi</i> .....	231
<i>mysis</i> .....	116	<i>Setella</i> .....	44	<i>consimilis</i> .....	413
<i>Platychelypus</i> .....	274	<i>norvegica</i> .....	44	<i>incertus</i> .....	415
<i>laophantoides</i> .....	276	<i>Stenelia</i> .....	148, 180	<i>longiremis</i> .....	240
<i>littoralis</i> .....	274	<i>annula</i> .....	184	<i>macronyx</i> .....	417
<i>Pantopodites</i> .....	399	<i>Blanchardi</i> .....	379	<i>malleolatus</i> .....	411
<i>typicus</i> .....	399	<i>confusa</i> .....	389	<i>pygmaeus</i> .....	414
<i>Parcellidella</i> .....	74	<i>denticulata</i> .....	382	<i>Scatti</i> .....	411
		<i>gibba</i> .....	181, 392		

	Page		Page		Page
<i>Thalestridae</i> .....	102	<i>peltata</i> .....	136	<i>minuta</i> .....	142
<i>Thalestris</i> .....	103	<i>polaris</i> .....	105	<i>monensis</i> .....	377
<i>brunnea</i> .....	108	<i>purpurca</i> .....	109	<i>nobilis</i> .....	140
<i>clausi</i> .....	111	<i>rufocincta</i> .....	120	<i>pygmaea</i> .....	143
<i>curticanda</i> .....	121	<i>rufoviolaceus</i> .....	107	<i>Zaus</i> .....	56
<i>forficula</i> .....	123	<i>serrulata</i> .....	118	<i>abbreviatus</i> .....	58
<i>forficuloides</i> .....	123	<i>Thisbe</i> .....	87	<i>Aurelii</i> .....	58
<i>gibba</i> .....	105	<i>ensifera</i> .....	90	<i>Goodsiri</i> .....	59
<i>harpactoides</i> .....	112	<i>Thyone</i> .....	75	<i>ovalis</i> .....	59
<i>helgolandica</i> .....	121	<i>Tigriopus</i> .....	54	<i>spinatus</i> .....	57, 364
<i>hibernica</i> .....	113	<i>fulvus</i> .....	54	<i>spinosus</i> .....	57
<i>Jacksoni</i> .....	114	<i>Lilljeborgi</i> .....	54	<i>Zosime</i> .....	26
<i>karmensis</i> .....	123	<i>Westwoodia</i> .....	139	<i>incrassata</i> .....	354
<i>longimanus</i> .....	104	<i>assimilis</i> .....	141, 377	<i>typica</i> .....	27, 353
<i>mysis</i> .....	116				

AN ACCOUNT  
OF THE  
**CRUSTACEA**  
OF  
**NORWAY**

WITH SHORT DESCRIPTIONS AND FIGURES OF ALL THE SPECIES

BY

G. O. SARS

PROFESSOR OF ZOOLOGY AT THE UNIVERSITY OF CHRISTIANIA

VOL. V

**COPEPODA**

HARPACTICOIDA

WITH 284 AUTOGRAPHIC PLATES

(TEXT)



**BERGEN**  
PUBLISHED BY THE BERGEN MUSEUM

SOLD BY

ALB. CAMMERMEYER'S FORLAG, CHRISTIANIA

1911

## PREFACE.

The elaboration of the present Volume has been connected with no small trouble and expenditure of time. Indeed, the group of Crustacea here treated of is undoubtedly one of the most difficult, both as regards the direct examination of the species, and the exact determination of the often very intricate mutual relation of the several types. The group has proved to be very richly represented in the Norwegian Fauna, as will appear from the extent of this Volume, (about 300 (291) different species, belonging to 99 genera, being treated of here); and yet I have every reason to believe that many other forms will be added in the future. As regards this statement, I will only point to the fact that during my last excursion, in the summer of 1910, no less than about 40 additional species, several new to science, were procured, and of these moreover by far the greater number were derived from a single locality at Korshavn, on the south coast of Norway.

The systematic arrangement of the genera adopted in this work can only be regarded as a quite provisional one. No doubt in the future essential improvements will be effected also in this respect. Although the present Volume cannot therefore lay any claim to being an exhaustive account of the group, I think that it will at least be found useful as a basis for further investigations.

As to the preparation of the plates accompanying this Volume, I have been anxious to give, besides analytical figures of the several appendages, also good habitus-figures of each species, drawn on a sufficiently large scale. The great advantage of such figures for an easy determination of the species is evident. In most cases it is found that earlier authors have contented themselves with giving only lateral figures of the species belonging to the present group. I find, however, that in many cases the dorsal view of the animal more clearly reveals the characteristic differences between nearly-related species than does the lateral view. In cases where only a single habitus-figure is given, I have therefore always preferred to represent the animal in a dorsal aspect. In most cases, however, the animal is



figured in both positions. The analytical figures have in all cases been associated in the same plates with the habitus-figures, an arrangement which is undoubtedly more convenient than that adopted by Th. Scott in some of his recent papers, where these figures are found scattered over many different plates.

I regret that in some few cases the figures on the plates have been less perfectly reproduced, owing to want of care on the part of the lithographer in the transfer of my drawings to the stone. In the great majority of cases, however, I hope that the plates will be found to suffice for an easy recognition of the species represented.

In concluding this Volume, I wish to express my most sincere thanks to those gentlemen who have assisted me in the work. To Canon A. M. Norman and Dr. Th. Scott I am much indebted for their kindness in sending me interesting specimens and in giving me other information useful to me. My hearty thanks are also due to Mr. O. Nordgaard, curator of the Trondhjem Museum, for his generosity in placing in my hands his whole material of *Harpacticoida*, as also for sending me several bottom-samples taken by him partly off the Finmark coast, partly off the Lofoten Islands and in the Skjærstad Fjord. Several interesting species, described and figured in the present Volume, were derived from these samples. Finally, I beg to thank the Direction of the Bergen Museum for the promptness with which it has attended to the printing and publishing of the several parts of this Volume, as soon as they left my hands.

**G. O. Sars.**

## PRINCIPAL WORKS ON HARPACTICOIDA.

---

- Aurivillius P. O.* *Balænoophilus unisetis.* 1879.
- Baird, W.* Natural History of British Entomostraca. 1850.
- Boeck, A.* Oversigt af de ved Norges Kyster iagttagne Copepoder. Chr. Vid. Selsk. Forh. 1864.
- Nye Slægter og Arter af Saltvandscopepoder. Chr. Vid. Selsk. Forh. 1872.
- Brady, G. S.* Monograph of British Copepoda, Vol. II. 1880.
- Report on the Copepoda of the Challenger Expedition. 1883.
- Several papers inserted in Nat. Hist. Transact. North. & Durham.
- Cann, E.* Les Copépodes du Boulonnais. 1892.
- Claus, C.* Die freilebenden Copepoden. 1862.
- Die Copepoden-Fauna von Nizza. 1866.
- Dana, J. D.* Crustacea of the United States Explor. Expedition. 1855.
- Fischer, S.* Beiträge zur Kenntniss der Entomostraceen. Abh. Kgl. Bayer. Akad. d. Wissensch. Bd. VIII. 1860.
- Giesbrecht, W.* Die freilebenden Copepoden der Kieler Förhrde. 1882.
- Fauna und Flora des Golfes von Neapel. Pelagische Copepoden. 1892.
- Goodsir, H.* On several new species of Crustacea allied to Saphirina. Ann. Mag. Nat. Hist. Vol. XIII. 1845.
- Herrick, C. L.* Synopsis of the Entomostraca of Minnesota. 1895.
- Jurine, L.* Histoire des Monocles. 1820.
- Krøyer, H.* In "Gaimard's Voyage en Scandinavie" (Atlas).
- Lilljeborg, W.* De Crustaceis ex ordinibus tribus in Scania occurrentibus. 1853.
- Synopsis Harpacticidarum aquæ dulcis Sveciæ. Kgl. Sv. Vet. Akad. Handl. Vol. 36. 1902.
- Müller, O. F.* Entomostraca. 1785.

- Norman, A. M.* Last Report on Dredging among the Shetland Isles. Brit. Assoc. Rep. 1868.
- & *Scott, T.* Crustacea of Devon & Cornwall. 1906.
- Philippi, A.* Beobachtungen über die Copepoden des Mittelmeeres. Wiegmann's Archiv 1840 & 1843.
- Pöppig, S. A.* Die freilebenden Copepoden des Jahdebusens. 1885.
- Sars, G. O.* Oversigt af de indenlandske Ferskvandcopepoder. Chr. Vid. Selsk. Forh. 1863.
- Crustacea of the 2nd Fram Expedition. 1909.
- Schmeil, O.* Deutschlands freilebenden Süßwasser Copepoden. Bd. II. Harpacticidæ. 1893.
- Scott, A.* Copepoda from Liverpool Bay. Rep. Lancashire Sea Fisheries Labor. 1896.
- Report on the Pearl Oyster Fisheries of the Gulf of Manaar. Copepoda. 1903.
- Copepoda of the Siboga Expedition. 1909.
- Scott, Th.* Report on Entomostraca from the Gulf of Guinea. Trans. Linn. Soc. Lond. Vol. VI. 1894.
- Revision of the British Copepoda belonging to the genera *Bradya* and *Ectinosoma*. Trans. Linn. Soc. Lond. Vol. VI. 1896.
- Numerous papers, most of them inserted in the Annual Reports of the Fishery Board for Scotland; some in Ann. Mag. Nat. Hist.; some in Linn. Soc. Bulletins.
- Thompson, J. C.* Revised Report on the Copepoda of Liverpool Bay. Trans. Liv. Biol. Soc. Vol. VII. 1893.
-

# SYSTEMATIC LIST

OF THE SPECIES DESCRIBED IN THIS VOLUME.

## Achirota.

### Misophriidæ.

- Misophria, Boeck.  
*pallida*, Boeck.

### Logipediidæ.

- Longipedia, Claus.  
*coronata*, Claus.  
*Scotti*, G. O. Sars.  
*minor*, Scott.  
*rosea*, G. O. Sars.

- Sunaristes, Hesse.  
*paguri*, Hesse.

- Canuella, Scott.  
*perplexa*, Scott.  
*furcigera*, G. O. Sars.

### Cerviniidæ.

- Cervinia, Norman.  
*Bradyi*, Norman.  
*synarthra*, G. O. Sars.  
Cerviniopsis, G. O. Sars.  
*clavicornis*, G. O. Sars.  
*longicaudata*, G. O. Sars.

- Eucanuella, Scott.  
*spinifera*, Scott.

- Zosime, Boeck.  
*typica*, Boeck.  
*incrassata*, G. O. Sars.

## Ectinosomidæ.

- Ectinosoma, Boeck.  
*Sarsi*, Boeck.  
*neglectum*, G. O. Sars.  
*propinquum*, Scott.  
*elongatum*, G. O. Sars.  
*Herdmani*, Scott.  
*melaniceps*, Boeck.  
*Normani*, Scott.  
*curticorne*, Boeck.  
*gothiciceps*, Giesbr.  
*mixtum*, G. O. Sars.  
*brevirostre*, G. O. Sars.  
*gracile*, Scott.  
*temuireme*, Scott.

- Microsetella, Brady & Rob.  
*norvegica*, Boeck.

- Ectinosomella, G. O. Sars.  
*nitidula*, G. O. Sars.

- Pseudobradya, G. O. Sars.  
*minor*, Scott.  
*acuta*, G. O. Sars.  
*similis*, Scott.  
*hirsuta*, Scott.  
*fusca*, Scott.  
*robusta*, G. O. Sars.  
*elegans*, Scott.

- Bradya, Boeck.  
*typica*, Boeck.



*dilatata*, G. O. Sars  
*armifera*, Scott.  
 Neobradya, Scott.  
*petniifera*, Scott.

## Chirognatha. Harpacticidæ.

Harpacticus, M. Edw.  
*chelifer*, Müller.  
*uniremis*, Kröyer.  
*gracilis*, Claus.  
*flexus*, Brady.  
*littoralis*, G. O. Sars  
 Tigriopus, Norman.  
*fulvus*, Fischer.  
 Zaus, Goodsir.  
*spinatus*, Goodsir.  
*abbreviatus*, G. O. Sars.  
*Goodsiri*, Brady.

## Peltidiidæ.

Alteutha, Baird.  
*interrupta*, Goodsir.  
*purpurocincta*, Norm.  
 Peltidium, Philippi.  
*purpureum*, Phil.

## Tegastidæ.

Tegastes, Norman.  
*falcatus*, Norman.  
*flavidas*, G. O. Sars.  
*Clausi*, G. O. Sars.  
*grandimanus*, G. O. Sars.  
*nanus*, G. O. Sars.  
*harpacticoides*, Claus.  
*calcaratus*, G. O. Sars.  
*longimanus*, Claus.  
 Parategastes, G. O. Sars.  
*sphaericus*, Claus.

## Porcellidiidæ.

Porcellidium, Claus.  
*fimbriatum*, Claus.

## Idyidæ.

Aspidiscus, Norman.  
*littoralis*, G. O. Sars.  
*fasciatus*, Norm.  
 Psamathe, Philippi.  
*longicauda*, Phil.  
 Machairopus, Brady.  
*minutus*, G. O. Sars.  
 Idyæa, Philippi.  
*furcata*, Baird.  
*minor*, Scott.  
*ensifera*, Fischer.  
*tenera*, G. O. Sars.  
*longicornis*, Scott.  
*elegantula*, G. O. Sars.  
*gracilis*, Scott.  
*angusta*, G. O. Sars.  
*finmarchica*, G. O. Sars.  
*tenella*, G. O. Sars.  
 Idyanthe, G. O. Sars.  
*dilatata*, G. O. Sars.  
*pusilla*, G. O. Sars.  
 Idyella, G. O. Sars.  
*pallidula*, G. O. Sars.  
*erigua*, G. O. Sars.

## Thalestridæ.

Thalestris, Claus.  
*longimana*, Claus.  
*gibba*, Kröyer.  
*ruforiolucens*, Claus.  
*brunnea*, G. O. Sars.  
*purpurea*, G. O. Sars.  
 Parathalestris, Brady & Rob.  
*Clausi*, Norman.  
*harpacticoides*, Claus.  
*hibernica*, Brady & Rob.  
*Jacksoni*, Scott.  
 Phyllothalestris, G. O. Sars.  
*mysis*, Claus.  
 Halithalestris, G. O. Sars.  
*Croni*, Kröyer.

Rhynchothalestris, G. O. Sars.

*rufocincta*, Norm.

*helgolandica*, Claus.

Microthalestris, G. O. Sars.

*forficula*, Claus.

*littoralis*, G. O. Sars.

Dactylopusia, Norman.

*thisboides*, Claus.

*neglecta*, G. O. Sars.

*vulgaris*, G. O. Sars.

*micronyx*, G. O. Sars.

*brevicornis*, Claus.

*latipes*, Boeck.

Dactylopodella, G. O. Sars.

*flava*, Claus.

*clypeata*, G. O. Sars.

Dactylopodopsis, G. O. Sars.

*dilatata*, G. O. Sars.

Idomene, Philippi.

*forficata*, Phil.

*borealis*, G. O. Sars.

Idomenella, Scott.

*coronata*, Scott.

Amenophia, Boeck.

*pellata*, Boeck.

*pulchella*, G. O. Sars.

Westwoodia, Dana.

*nobilis*, Baird.

*assimilis*, G. O. Sars.

*minuta*, Claus.

*pygmaea*, Scott.

*monensis*, Brady.

## Diosaccidæ.

Diosaccus, Boeck.

*tenuicornis*, Claus.

Amphiascus, G. O. Sars.

*cinctus*, Claus.

*obscurus*, G. O. Sars.

*similis*, Claus.

*nasutus*, Boeck.

*phyllopus*, G. O. Sars.

*latifolius*, G. O. Sars.

*thalestroides*, G. O. Sars.

*minutus*, Claus.

*curvans*, Scott.

*Giesbrechti*, G. O. Sars.

*propinquus*, G. O. Sars.

*longirostris*, Claus.

*tenuiremis*, Brady.

*parvus*, G. O. Sars.

*debilis*, Giesbr.

*pallidus*, G. O. Sars.

*abyssi*, Boeck.

*nanus*, G. O. Sars.

*exiguus*, G. O. Sars.

*Blanchardi*, Scott.

*tenellus*, G. O. Sars.

*linearis*, G. O. Sars.

*sinuatus*, G. O. Sars.

*denticulatus*, Thomps.

*Normani*, G. O. Sars.

*amblyops*, G. O. Sars.

*lagenirostris*, G. O. Sars.

*nanoides*, G. O. Sars.

*bulbifer*, G. O. Sars.

*spinulosus*, G. O. Sars.

*simulans*, Scott.

*attenuatus*, G. O. Sars.

*hispidus*, Norman

*affinis*, G. O. Sars.

*intermedius*, Scott.

*typhlops*, G. O. Sars.

*typhloides*, G. O. Sars.

*lamellifer*, G. O. Sars.

*confusus*, Scott.

Stenhelia, Boeck.

*gibba*, Boeck.

*proxima*, G. O. Sars.

*amula*, Scott.

*palustris*, Brady.

*reflexa*, Brady.

*Giesbrechti*, Scott.

*Normani*, Scott.

*longicaudata*, Boeck.

Stenheliopsis, G. O. Sars.

*divaricata*, G. O. Sars.

*latifarca*, G. O. Sars.

*media*, G. O. Sars.

## Canthocamptidæ.

- Canthocamptus, Westw.  
*staphylinus*, Jurine  
*minutus*, Claus.  
 Altheyella, Brady.  
*crassa*, G. O. Sars.  
*gracilis*, G. O. Sars.  
*pygmaea*, G. O. Sars.  
*arctica*, Lilljeb.  
*Duthiei*, Scott.  
 Moraria, Scott.  
*brevipes*, G. O. Sars.  
 Mesochra, Boeck.  
*Lilljeborgi*, Boeck.  
*pygmaea*, Claus.  
*hirticornis*, Scott.  
*erigua*, G. O. Sars.  
 Nitocera, Boeck.  
*typica*, Boeck.  
*spinipes*, Boeck.  
*pusilla*, G. O. Sars.  
 Ameira, Boeck.  
*longipes*, Boeck.  
*minuta*, Boeck.  
*Scotti*, G. O. Sars.  
*tau*, Gieshr.  
*simplex*, Scott.  
*attenuata*, Thoms.  
*tenicornis*, Scott.  
 Parameira, G. O. Sars.  
*parva*, Boeck.  
*major*, G. O. Sars.  
*propinqua*, Scott.  
 Pseudameira, G. O. Sars.  
*crassicornis*, G. O. Sars.  
*furcata*, G. O. Sars.  
 Ameiropsis, G. O. Sars.  
*brevicornis*, G. O. Sars.  
*longicornis*, G. O. Sars.  
*mirta*, G. O. Sars.  
*nobilis*, G. O. Sars.  
*angulifera*, G. O. Sars.  
*abbreviata*, G. O. Sars.

- Stenocopia, G. O. Sars.  
*longicaudata*, Scott.  
*spinosa*, Scott.  
*sclosa*, G. O. Sars.  
 Malacopsyllus, G. O. Sars.  
*fragilis*, G. O. Sars.  
 Leptomesochra, G. O. Sars.  
*attenuata*, A. Scott.  
*tenicornis*, G. O. Sars.  
*confluens*, G. O. Sars.  
 Phyllocamptus, Scott.  
*minutus*, G. O. Sars.  
 Paramesochra, Scott.  
*dubia*, Scott.  
 Tetragoniceps, Brady.  
*Scotti*, G. O. Sars.  
 Phyllopodopsyllus, Scott.  
*Bradyi*, Scott.  
*furciger*, G. O. Sars.  
 Pteropsyllus, Scott.  
*consimilis*, Scott.  
 Evansia, Scott.  
*incerta*, Scott.  
 Leptastacus, Scott.  
*mucronyx*, Scott.

## Laophontidæ.

- Laophonte, Philippi.  
*cornuta*, Phil.  
*serrata*, Claus.  
*depressu*, Scott.  
*thoracica*, Boeck.  
*elongata*, Boeck.  
*typhlops*, G. O. Sars.  
*longicaudata*, Boeck.  
*similis*, Claus.  
*horrida*, Norm.  
*brevispinosa*, G. O. Sars.  
*Koreni*, Boeck.  
*proxima*, G. O. Sars.  
*Strömi*, Baird.  
*curticauda*, Boeck.  
*minuta*, Boeck.

- littoralis*, Scott.  
*brevirostris*, Claus.  
*congenera*, G. O. Sars.  
*karmensis*, G. O. Sars.  
*perplexa*, Scott.  
*maceera*, G. O. Sars.  
*Nordguardi*, G. O. Sars.  
*parrula*, G. O. Sars.  
*nana*, G. O. Sars.  
*inopinata*, Scott.  
*denticornis*, Scott.  
**Pseudolaophonte**, A Scott.  
*spinosa*, Thomps  
**Laophontopsis**, G. O. Sars.  
*lamellifera*, Claus.  
**Asellopsis**, Brady.  
*hispida*, Brady.  
**Laophontodes**, Scott.  
*typicus*, Scott.  
*bicornis*, A. Scott.  
*expansus*, G. O. Sars.  
**Platyhelipus**, Brady.  
*littoralis*, Brady.  
*laophontoides*, G. O. Sars.  
**Normanella**, Brady.  
*minuta*, Boeck.  
*tenuifurca*, G. O. Sars.  
*mucronata*, G. O. Sars.

### Cletodidæ.

- Cletodes**, Brady.  
*limicola*, Brady.  
*tenuipes*, Scott.  
*curvirostris*, Scott.  
*longicaudatus*, Boeck.  
*Buchholtzi*, Boeck.  
**Orthopsyllus**, Brady.  
*linearis*, Claus.  
**Mesocletodes**, G. O. Sars.  
*irrasus*, Scott.  
**Eurycletodes**, G. O. Sars.  
*laticaudatus*, Boeck.  
*latus*, Scott.

- similis*, Scott.  
*major*, G. O. Sars.  
**Enhydrosoma**, Boeck.  
*curticaudatum*, Boeck.  
*propinqueum*, Brady.  
*longifurcatum*, G. O. Sars.  
**Rhizothrix**, Brady.  
*curvata*, Brady.  
*gracilis*, Scott.  
**Huntemannia**, Poppe.  
*jahdensis*, Poppe  
**Nannopus**, Brady.  
*pulustris*, Brady.  
**Pontopolites**, Scott.  
*typicus*, Scott.  
**Fultonia**, Scott  
*hirsuta*, Scott.  
**Argestes**, G. O. Sars.  
*mollis*, G. O. Sars.

### Anchorabolidæ.

- Anchorabulus**, Norman.  
*mirabilis*, Norman.  
**Echinopsyllus**, G. O. Sars.  
*Normani*, G. O. Sars.  
**Ceratonotus**, G. O. Sars.  
*pectinatus*, G. O. Sars.  
**Arthropsoyllus**, G. O. Sars.  
*serratus*, G. O. Sars.  
**Anoplosoma**, G. O. Sars.  
*sordidum*, G. O. Sars.

### Cylindropsyllidæ.

- Cylindropsyllus**, Brady.  
*lævis*, Brady.  
**Stenocaris**, G. O. Sars.  
*gracilis*, G. O. Sars.  
*minor*, Scott.  
**D'Arcythompsonia**, Scott.  
*fairlieensis*, Scott.



**Tachidiidæ.**

- Tachidius, Lilljeb.  
*brevicornis*, Lilljeb.  
 Pseudotachidius, Scott  
*coronatus*, Scott.  
 Tachidiella, G. O. Sars.  
*minuta*, G. O. Sars.  
 Tachidiopsis, G. O. Sars.  
*cyclopoides*, G. O. Sars.  
 Robertsonia, Brady.  
*tenuis*, Brady.  
 Danielssenia, Boeck.  
*typica*, Boeck.  
*fusiformis*, Brady.

- Psammis, G. O. Sars.  
*longisetosa*, G. O. Sars.

**Metidæ.**

- Metis, Philippi.  
*ignea*, Phil.

**Balænoophilidæ.**

- Balænophilus, Aurivillius.  
*unisctis*, Auriv.

AN ACCOUNT  
OF THE  
**CRUSTACEA**  
OF  
**NORWAY**

WITH SHORT DESCRIPTIONS AND FIGURES OF ALL THE SPECIES

BY

G. O. SARS

PROFESSOR OF ZOOLOGY AT THE UNIVERSITY OF CHRISTIANIA

VOL. V

**COPEPODA**

HARPACTICOIDA

(PLATES)



**BERGEN**  
PUBLISHED BY THE BERGEN MUSEUM

SOLD BY

ALB. CAMMERMEYER'S FORLAG, CHRISTIANIA

1911

# LIST OF PLATES

(WITH CORRECTIONS).

*Letterings.*—♀ female; ♂ male; *C.* cephalic segment; *Urs* urosome with the caudal rami; *gen. ar.* genital area; *F.* furcal joints; *R.* rostrum; *a.*<sup>1</sup> anterior antenna; *a.*<sup>2</sup> posterior antenna; *L.* anterior lip; *M.* mandible; *Mp.* mandibular palp; *m.* maxilla; *mp.*<sup>1</sup> anterior maxilliped; *mp.*<sup>2</sup> posterior maxilliped; *p.*<sup>1</sup>—*p.*<sup>5</sup> legs of 1st to 5th pairs.; *gen. l.* genital lobe of male.

- Pl. I.  
Misophria pallida, Boeck.
- Pl. II.  
Misophria pallida, Boeck (continued).
- Pl. III.  
Longipedia coronata, Claus.
- Pl. IV.  
Longipedia coronata, Claus (continued).
- Pl. V.  
1. Longipedia Scotti, G. O. Sars.  
2. — minor, Scott.  
3. — rosea, G. O. Sars.
- Pl. VI.  
Sunaristes paguri, Hesse.
- Pl. VII.  
Sunaristes paguri, Hesse (continued).
- Pl. VIII.  
Canuella perplexa, Scott.
- Pl. IX.  
Canuella perplexa, Scott (continued).
- Pl. X.  
Canuella fureigera, G. O. Sars.
- Pl. XI.  
Cervinia synarthra, G. O. Sars (see Supplement).

- Pl. XII.  
Cerviniopsis clavicornis, G. O. Sars.
- Pl. XIII.  
1. Cerviniopsis clavicornis, G. O. Sars (contin.).  
2. — longicaudata, G. O. Sars.
- Pl. XIV.  
Eucanuella spinifera, Scott.
- Pl. XV.  
Zosime typica, Boeck.
- Pl. XVI.  
Ectinosoma Sarsi, Boeck.
- Pl. XVII.  
1. Ectinosoma neglectum, G. O. Sars.  
2. — propinquum, Scott.
- Pl. XVIII.  
1. Ectinosoma elongatum, G. O. Sars.  
2. — Herdmani, Scott.
- Pl. XIX.  
1. Ectinosoma melaniceps, Boeck.  
2. — Normani, Scott.
- Pl. XX.  
1. Ectinosoma curticorne, Boeck.  
2. — gothiceps, Giesbr.
- Pl. XXI.  
1. Ectinosoma mixtum, G. O. Sars.  
2. — brevirostre, G. O. Sars.

## Pl. XXII.

1. *Ectinosoma gracile*, Scott.
2. *Pseudobradya minor*, (Scott).

## Pl. XXIII.

1. *Pseudobradya acuta*, G. O. Sars.
2. — *similis*, (Scott).

## Pl. XXIV.

*Microsetella norvegica*, (Boeck) (see text).

## Pl. XXV.

*Bradya typica*, Boeck.

## Pl. XXVI.

*Bradya dilatata*, G. O. Sars.

## Pl. XXVII.

*Harpacticus chelifer*, (Müller).

## Pl. XXVIII.

*Harpacticus chelifer*, (Müller) (continued).

## Pl. XXIX.

*Harpacticus uniremis*, (Krøyer).

## Pl. XXX.

1. *Harpacticus gracilis*, Claus.
2. — *flexus*, Brady.

## Pl. XXXI.

*Tigriopus fulvus*, (Fischer).

## Pl. XXXII.

*Tigriopus fulvus*, (Fischer) (continued).

## Pl. XXXIII.

*Zaus spinatus*, (Goodsir).

## Pl. XXXIV.

*Zaus abbreviatus*, G. O. Sars.

## Pl. XXXV.

*Zaus Goodsiri*, Brady.

## Pl. XXXVI.

*Alteutha interrupta*, (Goodsir).

## Pl. XXXVII.

*Alteutha interrupta*, (Goodsir) (continued).

## Pl. XXXVIII.

*Alteutha purpurocincta*, Norman (see Supplmt.).

## Pl. XXXIX.

*Pelididium purpureum*, Philippi.

## Pl. XL.

*Pelididium purpureum* Philippi (continued).

## Pl. XLI.

*Tegastes falcatus*, Norman.

## Pl. XLII.

1. *Tegastes flavidus*, G. O. Sars.
2. — *Clausi*, G. O. Sars (see Supplmt.).
3. — *grandimanus*, G. O. Sars.
4. — *nanus*, G. O. Sars.

## Pl. XLIII.

*Parategastes sphaericus*, (Claus).

## Pl. XLIV.

*Porcellidium fimbriatum*, Claus.

## Pl. XLV.

*Porcellidium fimbriatum*, Claus (continued).

## Pl. XLVI.

*Aspidiscus littoralis*, G. O. Sars.

## Pl. XLVII.

*Aspidiscus littoralis*, G. O. Sars (continued).

## Pl. XLVIII.

*Aspidiscus fasciatus*, Norman.

## Pl. XLIX.

*Psamathe longicauda*, Philippi.

## Pl. L.

*Machairopus minutus*, G. O. Sars.

## Pl. LI.

*Idyæa furcata*, (Baird) (see Supplmt.).

## Pl. LII.

1. *Idyæa furcata*, (Baird) (continued).
2. — *minor*, Scott.

## Pl. LIII.

1. *Idyæa ensifera*, (Fischer).
2. — *tenera*, G. O. Sars.

## Pl. LIV.

1. *Idyæa longicornis*, Scott.
2. — *elegantula*, G. O. Sars.

## Pl. LV.

1. *Idyæa gracilis*, Scott.
2. — *angusta*, G. O. Sars.

## Pl. LVI.

*Idyæa finmarchica*, G. O. Sars.

## Pl. LVII.

1. *Idyanthe dilatata*, G. O. Sars (see Supplmt.).
2. — *pusilla*, G. O. Sars.



- Pl. LVIII.  
 1. *Idyella pallidula*, G. O. Sars.  
 2. — *exigua*, G. O. Sars.
- Pl. LIX.  
*Thalestris longimana*, Claus.
- Pl. LX.  
*Thalestris longimana*, Claus (continued).
- Pl. LXI.  
*Thalestris gibba*, (Kröyer).
- Pl. LXII.  
*Thalestris rufoviolacens*, Claus.
- Pl. LXIII.  
*Thalestris brunnea*, G. O. Sars.
- Pl. LXIV.  
*Thalestris purpurea*, G. O. Sars.
- Pl. LXV.  
*Parathalestris Clausi*, (Norman).
- Pl. LXVI.  
*Parathalestris Clausi*, (Norman) (continued).
- Pl. LXVII.  
*Parathalestris harpacticoides*, (Claus).
- Pl. LXVIII.  
*Parathalestris hibernica*, (Brady & Rob.).
- Pl. LXIX.  
*Parathalestris Jacksoni*, (Scott).
- Pl. LXX.  
*Phyllothalestris mysis*, (Claus).
- Pl. LXXI.  
*Phyllothalestris mysis*, (Claus) (continued).
- Pl. LXXII.  
*Halithalestris Croni*, (Kröyer).
- Pl. LXXIII.  
*Rhynchothalestris rufocincta*, (Norman).
- Pl. LXXIV.  
*Rhynchothalestris rufocincta*, (Norman) (continued).
- Pl. LXXV.  
*Rhynchothalestris helgolandica*, (Claus).
- Pl. LXXVI.  
*Microthalestris forficula*, (Claus).
- Pl. LXXVII.  
*Dactylopusia thisboides*, Claus.

- Pl. LXXVIII.  
 1. *Dactylopusia thisboides*, Claus (continued).  
 2. — *neglecta*, G. O. Sars.
- Pl. LXXIX.  
 1. *Dactylopusia vulgaris*, G. O. Sars.  
 2. — *micronyx*, G. O. Sars.
- Pl. LXXX.  
*Dactylopusia brevicornis*, Claus.
- Pl. LXXXI.  
*Dactylopodella flava*, Claus.
- Pl. LXXXII.  
*Idomene forficata*, Philippi.
- Pl. LXXXIII.  
*Amenophia peltata*, Boeck.
- Pl. LXXXIV.  
 1. *Amenophia peltata*, Boeck (continued).  
 2. — *pulehella*, G. O. Sars.
- Pl. LXXXV.  
*Westwoodia nobilis*, (Baird).
- Pl. LXXXVI.  
*Westwoodia nobilis*, (Baird) (continued).
- Pl. LXXXVII.  
*Westwoodia assimilis*, G. O. Sars.
- Pl. LXXXVIII.  
 1. *Westwoodia minuta*, Claus.  
 2. — *pygmæa*, (Scott).
- Pl. LXXXIX.  
*Diosaccus tenuicornis*, (Claus).
- Pl. XC.  
*Diosaccus tenuicornis*, (Claus) (continued).
- Pl. XCI.  
*Amphiascus einctus*, (Claus).
- Pl. XCII.  
*Amphiascus einctus*, (Claus) (continued).
- Pl. XCIII.  
*Amphiascus obscurus*, G. O. Sars.
- Pl. XCIV.  
*Amphiascus similis*, (Claus).
- Pl. XCV.  
*Amphiascus nasutus*, Boeck.
- Pl. XCVI.  
*Amphiascus minutus*, (Claus).

- Pl. XCVII.  
*Amphiascus varians*. (Norm. & Scott) (see  
 Supplmt.).
- Pl. XCVIII.  
*Amphiascus Giesbrechti*. G. O. Sars.
- Pl. XCIX.  
*Amphiascus propinquus*. G. O. Sars.
- Pl. C.  
*Amphiascus longirostris*. (Claus).
- Pl. CI.  
*Amphiascus longirostris*. (Claus) (continued).
- Pl. CII.  
*Amphiascus tenuiremis*. (Brady).
- Pl. CIII.  
*Amphiascus parvus*. G. O. Sars.
- Pl. CIV.  
*Amphiascus debilis*. (Giesbr.).
- Pl. CV.  
*Amphiascus pallidus*. G. O. Sars.
- Pl. CVI.  
*Amphiascus abyssii*. (Boeck).
- Pl. CVII.  
*Amphiascus hispidus*. (Norm.).
- Pl. CVIII.  
*Amphiascus hispidus*. (Norman) (continued).
- Pl. CIX.  
*Amphiascus affinis*. G. O. Sars.
- Pl. CX.  
*Amphiascus intermedius*. (Scott).
- Pl. CXI.  
*Amphiascus typhlops*. G. O. Sars.
- Pl. CXII.  
*Amphiascus attenuatus*. G. O. Sars.
- Pl. CXIII.  
*Amphiascus phyllopus*. G. O. Sars.
- Pl. CXIV.  
 1. *Amphiascus nanus*. G. O. Sars.  
 2. — *oxiguus*. G. O. Sars.
- Pl. CXV.  
*Amphiascus Blanchardi*. (Scott) (see Supplmt.).
- Pl. CXVI.  
*Amphiascus tenellus*. G. O. Sars.
- Pl. CXVII.  
*Amphiascus linearis*. G. O. Sars.
- Pl. CXVIII.  
*Amphiascus sinuatus*. G. O. Sars.
- Pl. CXIX.  
*Stenhelia gibba*. Boeck.
- Pl. CXX.  
 1. *Stenhelia gibba*. Boeck (continued).  
 2. — *proxima*. G. O. Sars.
- Pl. CXXI.  
*Stenhelia æmula*. (Scott).
- Pl. CXXII.  
*Stenhelia palustris*. (Brady).
- Pl. CXXIII.  
*Stenhelia reflexa*. (Brady).
- Pl. CXXIV.  
 1. *Stenhelia Giesbrechti*. (Scott).  
 2. — *Normani*. (Scott).
- Pl. CXXV.  
 1. *Stenhelia longicaudata*. Boeck.  
 2. *Stenheliopsis divaricata*. G. O. Sars.
- Pl. CXXVI.  
*Canthocamptus staphylinus*. (Jurine).
- Pl. CXXVII.  
*Canthocamptus staphylinus*. (Jur.) (continued).
- Pl. CXXVIII.  
*Canthocamptus minutus*. Claus.
- Pl. CXXIX.  
*Attheyella crassa*. G. O. Sars.
- Pl. CXXX.  
*Attheyella gracilis*. G. O. Sars.
- Pl. CXXXI.  
*Attheyella pygmæa*. G. O. Sars.
- Pl. CXXXII.  
*Attheyella arctica*. (Lilljeh.).
- Pl. CXXXIII.  
*Attheyella Duthiei*. (Scott).
- Pl. CXXXIV.  
*Moraria brevipes*. G. O. Sars.
- Pl. CXXXV.  
*Mesochra Lilljeborgi*. Boeck.

- Pl. CXXXVI.  
*Mesochra pygmaea*, (Claus).
- Pl. CXXXVII.  
*Mesochra hirticornis*, (Scott).
- Pl. CXXXVIII.  
*Nitocra typica*, Boeck.
- Pl. CXXXIX.  
*Nitocra spinipes*, Boeck.
- Pl. CXL.  
*Ameira longipes*, Boeck.
- Pl. CXLI.  
*Ameira minuta*, Boeck.
- Pl. CXLII.  
*Ameira Scotti*, G. O. Sars (see Supplmt.).
- Pl. CXLIII.  
*Ameira tau*, (Giesbrecht).
- Pl. CXLIV.  
*Ameira simplex*, Norm. & Scott.
- Pl. CXLV.  
*Ameira attenuata*, Thomps. (see Supplmt.).
- Pl. CXLVI.  
*Parameira parva*, (Boeck).
- Pl. CXLVII.  
*Parameira major*, G. O. Sars.
- Pl. CXLVIII.  
*Ameiropsis brevicornis*, G. O. Sars.
- Pl. CXLIX.  
*Ameiropsis longicornis*, G. O. Sars.
- Pl. CL.  
*Ameiropsis mixta*, G. O. Sars.
- Pl. CLI.  
*Stenocopia longicaudata*, (Scott).
- Pl. CLII.  
*Stenocopia longicaudata*, (Scott) (continued).
- Pl. CLIII.  
*Stenocopia setosa*, G. O. Sars.
- Pl. CLIV.  
*Stenocopia setosa*, G. O. Sars (continued).
- Pl. CLV.  
*Phyllopodopsyllus Bradyi*, Scott.
- Pl. CLVI.  
 1. *Phyllopodopsyllus Bradyi*, Scott (contin.).  
 2. — *fureifer*, G. O. Sars.
- Pl. CLVII.  
*Laophonte cornuta*, Philippi.
- Pl. CLVIII.  
*Laophonte cornuta*, Phil. (continued).
- Pl. CLIX.  
*Laophonte serrata*, (Claus).
- Pl. CLX.  
*Laophonte depressa*, Scott.
- Pl. CLXI.  
*Laophonte thoracica*, Boeck.
- Pl. CLXII.  
*Laophonte elongata*, Boeck.
- Pl. CLXIII.  
*Laophonte typhlops*, G. O. Sars.
- Pl. CLXIV.  
*Laophonte longicaudata*, Boeck.
- Pl. CLXV.  
*Laophonte similis*, (Claus).
- Pl. CLXVI.  
*Laophonte horrida*, Norm.
- Pl. CLXVII.  
*Laophonte horrida*, Norm. (continued).
- Pl. CLXVIII.  
*Laophonte brevispinosa*, G. O. Sars.
- Pl. CLXIX.  
*Laophonte Koreni*, Boeck.
- Pl. CLXX.  
*Laophonte proxima*, G. O. Sars.
- Pl. CLXXI.  
*Laophonte Strömi*, (Baird).
- Pl. CLXXII.  
*Laophonte Strömi*, (Baird) (continued).
- Pl. CLXXIII.  
*Laophonte curticauda*, Boeck.
- Pl. CLXXIV.  
*Laophonte minuta*, Boeck.
- Pl. CLXXV.  
*Laophonte littoralis*, Scott.

- PL. CLXXVI.  
*Laophonte brevirostris*, (Claus).
- PL. CLXXVII.  
*Laophonte congenera*, G. O. Sars.
- PL. CLXXVIII.  
*Laophonte perplexa*, Scott.
- PL. CLXXIX.  
*Laophonte macera*, G. O. Sars.
- PL. CLXXX.  
*Laophonte Nordgaardii*, G. O. Sars.
- PL. CLXXXI.  
*Laophonte parvula*, G. O. Sars.
- PL. CLXXXII.  
*Laophonte nana*, G. O. Sars.
- PL. CLXXXIII.  
*Laophonte inopinata*, Scott.
- PL. CLXXXIV.  
*Laophonte denticornis*, Scott.
- PL. CLXXXV.  
*Laophontopsis lamellifera*, (Claus).
- PL. CLXXXVI.  
*Asellopsis hispida*, Brady.
- PL. CLXXXVII.  
*Laophontodes typicus*, Scott.
- PL. CLXXXVIII.  
*Laophontodes bicornis*, A. Scott.
- PL. CLXXXIX.  
*Laophontodes expansus*, G. O. Sars.
- PL. CXC.  
*Platychelipus littoralis*, Brady.
- PL. CXCI.  
*Platychelipus littoralis*, Brady (continued).
- PL. CCLII.  
*Platychelipus laophontoides*, G. O. Sars.
- PL. CXCIII.  
*Normanella minuta*, (Boeck).
- PL. CXCIV.  
 1. *Normanella tenuifurca*, G. O. Sars.  
 2. — *mucronata*, G. O. Sars.
- PL. CXCV.  
*Cletodes limicola*, Brady.

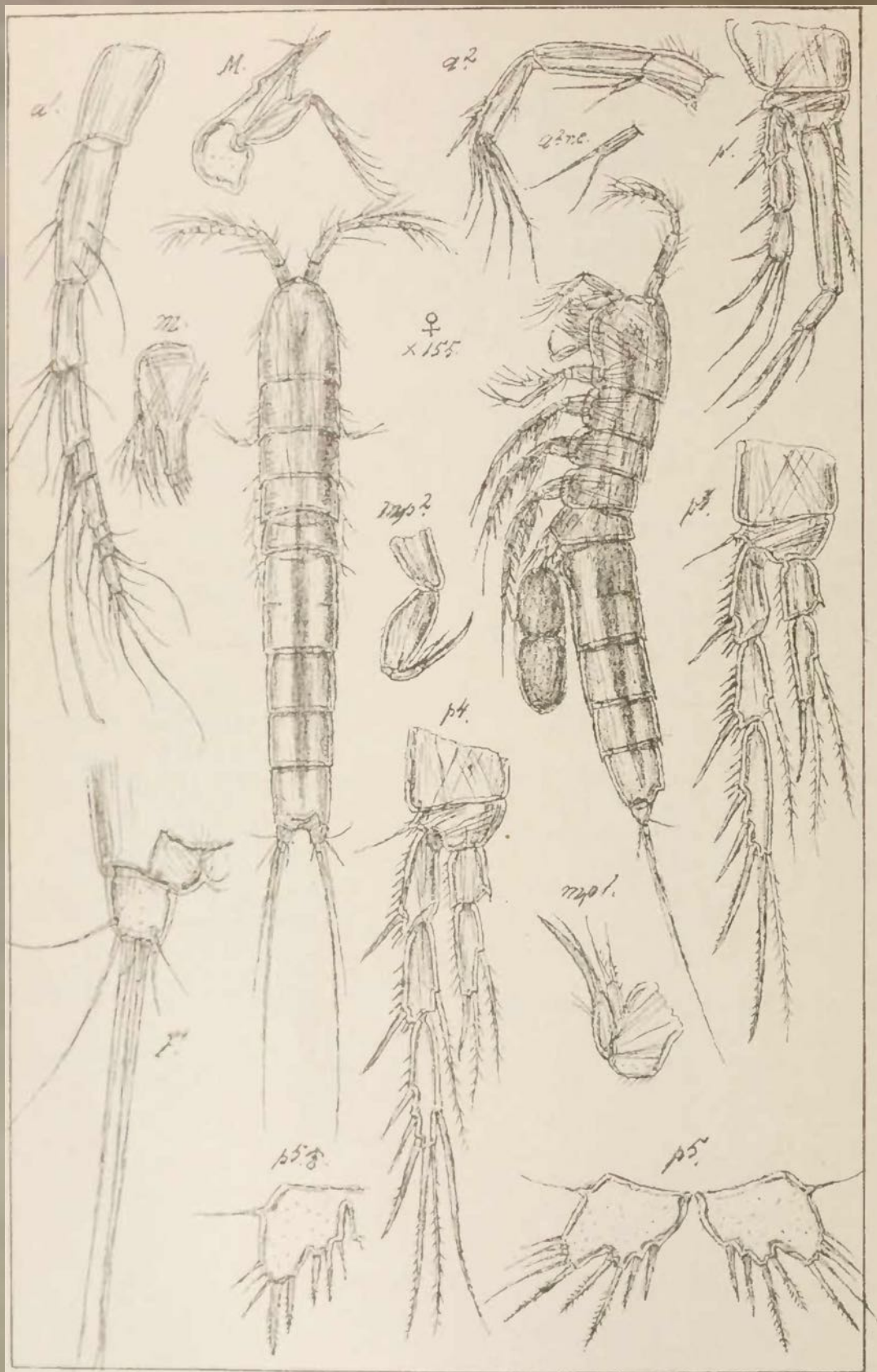
- PL. CXCVI.  
 1. *Cletodes tenuipes*, Scott.  
 2. — *curvirostris*, Scott.
- PL. CXCVII.  
*Cletodes longicaudatus*, (Boeck).
- PL. CXCVIII.  
*Cletodes Buchholtzi*, Boeck.
- PL. CXCVIX.  
*Orthopsyllus linearis*, (Claus).
- PL. CC.  
*Mesocletodes irrasus*, (Scott).
- PL. CCI.  
*Eurycletodes laticaudatus*, (Boeck).
- PL. CCII.  
*Eurycletodes latus*, (Scott).
- PL. CCIII.  
*Eurycletodes similis*, (Scott).
- PL. CCIV.  
*Eurycletodes major*, G. O. Sars.
- PL. CCV.  
*Enhydrosoma curticaudatum*, Boeck.
- PL. CCVI.  
 1. *Enhydrosoma propinquum*, (Brady).  
 2. — *longifurcatum*, G. O. Sars.
- PL. CCVII.  
*Rhizothrix curvata*, Brady & Rob.
- PL. CCVIII.  
*Huntemannia jahdensis*, Poppe.
- PL. CCIX.  
*Nannopus palustris*, Brady.
- PL. CCX.  
*Pontopolites typicus*, Scott.
- PL. CCXI.  
*Ancorabolus mirabilis*, Norman.
- PL. CCXII.  
*Echinopsyllus Normanii*, G. O. Sars.
- PL. CCXIII.  
*Ceratonotus pectinatus*, G. O. Sars.
- PL. CCXIV.  
*Arthropsoyllus serratus*, G. O. Sars.
- PL. CCXV.  
*Cylindropsyllus lævis*, Brady.

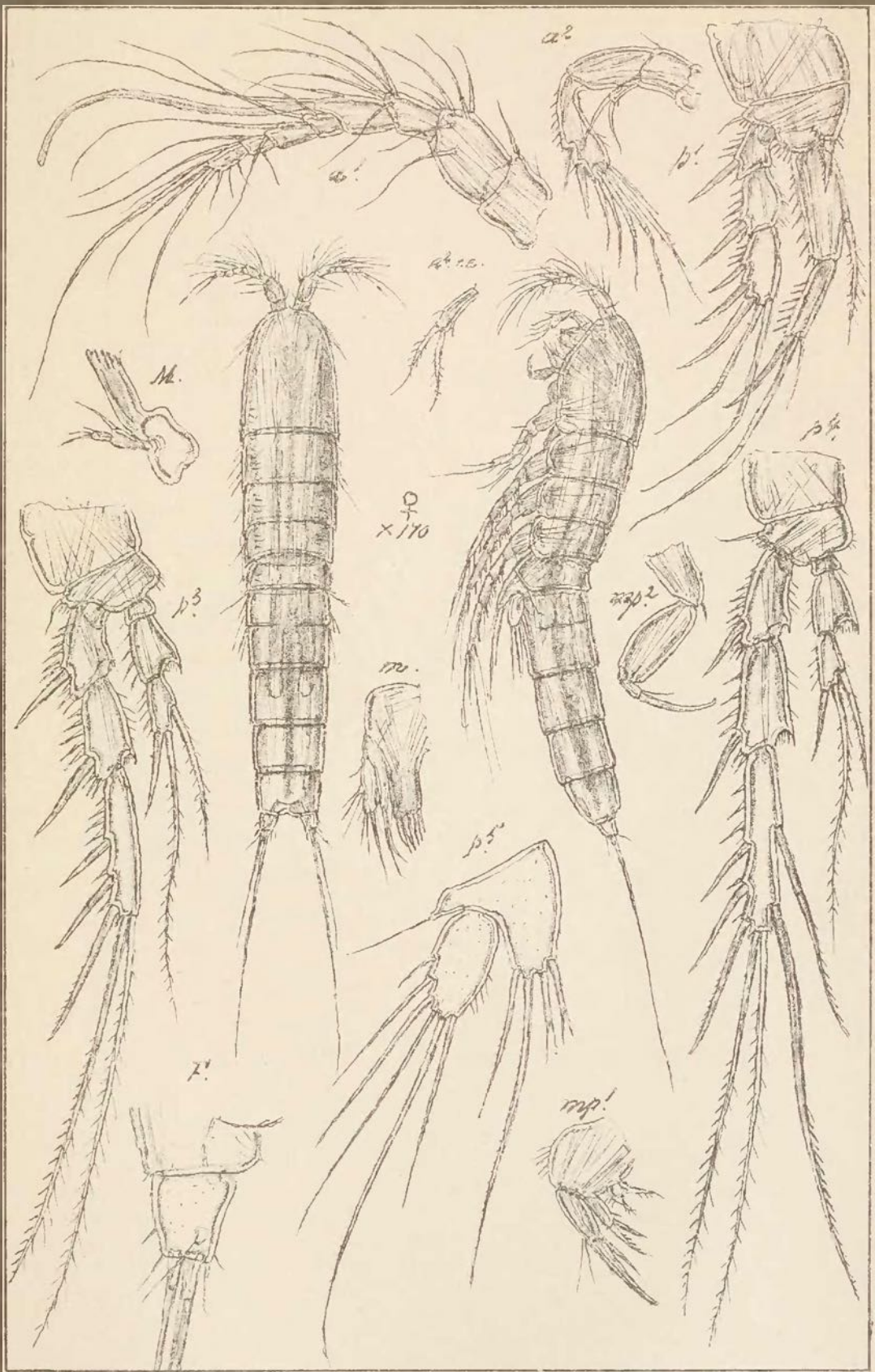
- Pl. CCXVI.  
*Stenocaris gracilis*, G. O. Sars.
- Pl. CCXVII.  
*D'Arcythompsonia fairliensis*, Scott.
- Pl. CCXVIII.  
*Tachidius brevicornis*, Lilljeborg.
- Pl. CCXIX.  
*Tachidius brevicornis*, Lilljeb. (continued).
- Pl. CCXX.  
*Pseudotachidius coronatus*, Scott.
- Pl. CCXXI.  
*Tachidiella minuta*, G. O. Sars.
- Pl. CCXXII.  
*Robertsonia tenuis* Brady.
- Pl. CCXXIII.  
*Danielssenia typica*, Boeck.
- Pl. CCXXIV.  
*Danielssenia fusiformis*, (Brady).
- Pl. CCXXV.  
*Psammis longisetosa*, G. O. Sars.
- Pl. CCXXVI.  
*Fultonia hirsuta*, Scott.
- Pl. CCXXVII.  
*Argestes mollis*, G. O. Sars.
- Pl. CCXXVIII.  
*Metis ignea*, Philippi.
- Pl. CCXXIX.  
*Balænophilus unisetis*, Auriv.
- Pl. CCXXX.  
*Balænophilus unisetis*, Auriv. (continued).
- Suppl. Pl. 1.  
*Cervinia Bradyi*, Norman.
- Suppl. Pl. 2.  
 1. *Eucanuella spinifera*, Scott.  
 2. *Zosime typica*, Boeck.
- Suppl. Pl. 3.  
*Zosime incrassata*, G. O. Sars.
- Suppl. Pl. 4.  
 1. *Pseudobradya hirsuta*, (Scott).  
 2. — *fusca*, (Scott).

- Suppl. Pl. 5.  
*Pseudobradya robusta*, G. O. Sars.
- Suppl. Pl. 6.  
 1. *Pseudobradya elegans*, (Scott).  
 2. *Bradya armifera*, (Scott).
- Suppl. Pl. 7.  
*Ectinosomella nitidula*, G. O. Sars.
- Suppl. Pl. 8.  
*Harpacticus littoralis*, G. O. Sars.
- Suppl. Pl. 9.  
 1. *Tagastes harpacticoides*, (Claus).  
 2. — *calcaratus*, G. O. Sars.  
 3. — *longimanus*, (Claus).
- Suppl. Pl. 10.  
*Idyæa tenella*, G. O. Sars.
- Suppl. Pl. 11.  
 1. *Microthalestris littoralis*, G. O. Sars.  
 2. *Dactylopusia latipes*, Boeck.
- Suppl. Pl. 12.  
*Dactylopodopsis dilatata*, G. O. Sars.
- Suppl. Pl. 13.  
 1. *Dactylopedella clypeata*, G. O. Sars.  
 2. *Idomene borealis*, G. O. Sars.
- Suppl. Pl. 14.  
*Idomenella coronata*, Scott.
- Suppl. Pl. 15.  
*Westwoodia monensis*, (Brady).
- Suppl. Pl. 16.  
*Amphiascus latifolius*, G. O. Sars.
- Suppl. Pl. 17.  
*Amphiascus thalestroides*, G. O. Sars.
- Suppl. Pl. 18.  
*Amphiascus denticulatus*, (Thompson).
- Suppl. Pl. 19.  
 1. *Amphiascus Normani*, G. O. Sars.  
 2. — *amblyops*, G. O. Sars.
- Suppl. Pl. 20.  
*Amphiascus lagenirostris*, G. O. Sars.
- Suppl. Pl. 21.  
 1. *Amphiascus nanoides*, G. O. Sars.  
 2. — *bulbifer*, G. O. Sars.
- Suppl. Pl. 22.  
*Amphiascus spinulosus*, G. O. Sars.



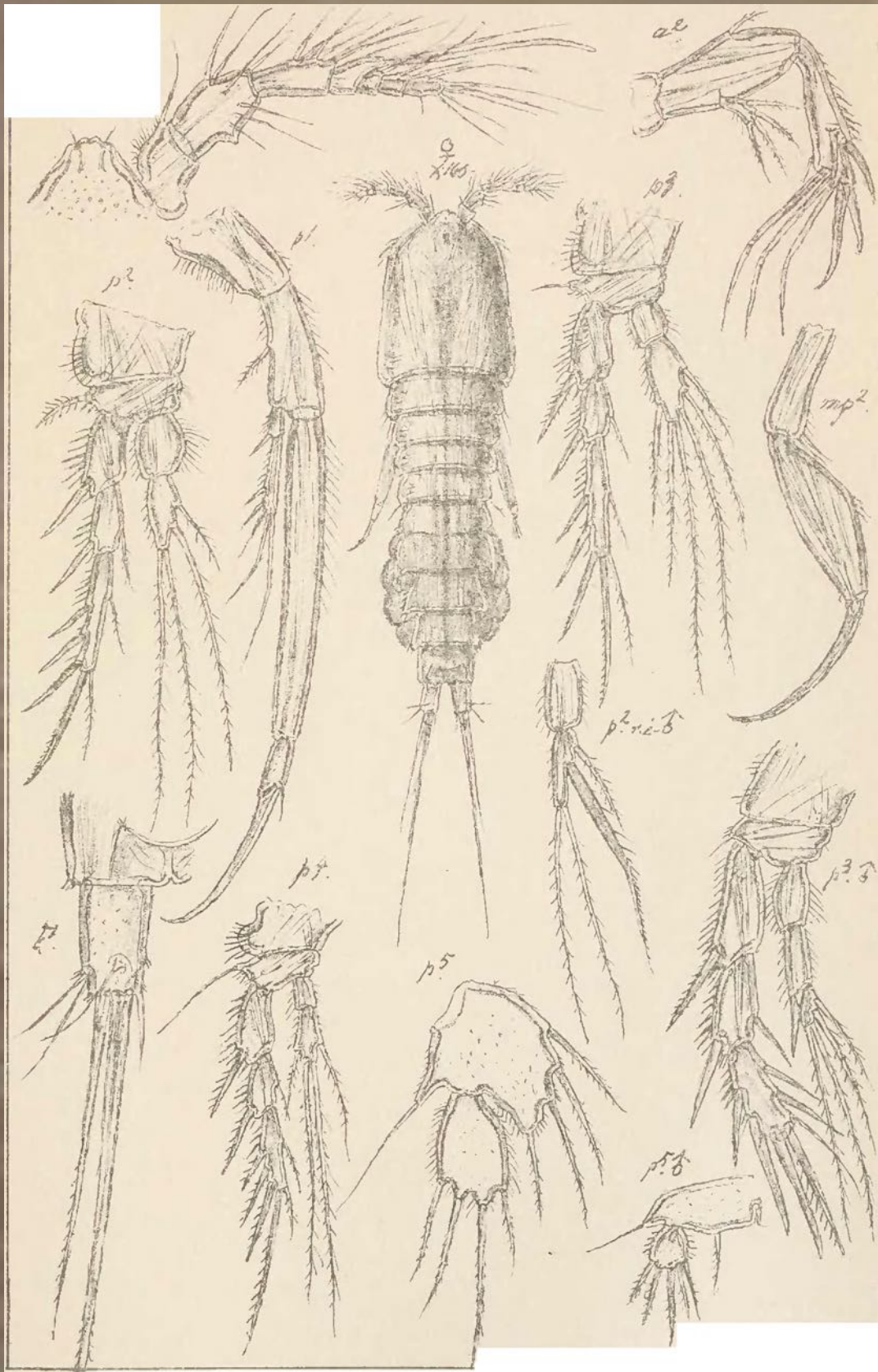
- Supplm. Pl. 23.  
*Amphiaseus confusus*, (Scott).
- Supplm. Pl. 24.  
 1. *Amphiaseus typhloides*, G. O. Sars.  
 2. — *lamellifer*, G. O. Sars.
- Supplm. Pl. 25.  
 1. *Stenheliopsis latifurea*, G. O. Sars.  
 2. — *media*, G. O. Sars.
- Supplm. Pl. 26.  
 1. *Mesochra exigua*, G. O. Sars.  
 2. *Nitocera pusilla*, G. O. Sars.
- Supplm. Pl. 27.  
*Ameira tenuicornis*, Scott.
- Supplm. Pl. 28.  
*Parameira propinqua*, (Scott).
- Supplm. Pl. 29.  
*Pseudameira crassicornis*, G. O. Sars.
- Supplm. Pl. 30.  
*Pseudameira fureata*, G. O. Sars.
- Supplm. Pl. 31.  
*Ameiropsis nobilis*, G. O. Sars.
- Supplm. Pl. 32.  
*Ameiropsis angulifera*, G. O. Sars.
- Supplm. Pl. 33.  
*Ameiropsis abbreviata*, G. O. Sars.
- Supplm. Pl. 34.  
*Stenocopia spinosa*, (Scott).
- Supplm. Pl. 35.  
*Malacopsyllus fragilis*, G. O. Sars.
- Supplm. Pl. 36.  
*Tetragoneiceps* Scotti, G. O. Sars.
- Supplm. Pl. 37.  
 1. *Tetragoneiceps* Scotti, G. O. Sars. (continued).  
 2. *Phyllopodopsyllus Bradyi*, Scott (male).
- Supplm. Pl. 38.  
*Pteropsyllus consimilis*, Scott.
- Supplm. Pl. 39.  
*Evansia incerta*, Scott.
- Supplm. Pl. 40.  
*Leptastacus macronyx*, Scott.
- Supplm. Pl. 41.  
*Leptomesochra attenuata*, (A. Scott).
- Supplm. Pl. 42.  
*Leptomesochra tenuicornis*, G. O. Sars.
- Supplm. Pl. 43.  
*Leptomesochra confluens*, G. O. Sars.
- Supplm. Pl. 44.  
*Phyllocamptus minutus*, G. O. Sars.
- Supplm. Pl. 45.  
*Paramesochra dubia*, Scott.
- Supplm. Pl. 46.  
*Laophonte karmensis*, G. O. Sars.
- Supplm. Pl. 47.  
*Pseudolaophonte spinosa*, (Thompson).
- Supplm. Pl. 48.  
*Rhizothrix gracilis*, (Scott).
- Supplm. Pl. 49.  
*Anoplosoma sordidum*, G. O. Sars.
- Supplm. Pl. 50.  
*Stenocaris minor*, (Scott).
- Supplm. Pl. 51.  
*Tachidiopsis cyclopoides*, G. O. Sars.
- Supplm. Pl. 52.  
*Ectinosoma tenuireme*, Scott.
- Supplm. Pl. 53.  
*Neobradya pectinifera*, Scott.
- Supplm. Pl. 54.  
*Amphiaseus simulans*, (Scott).



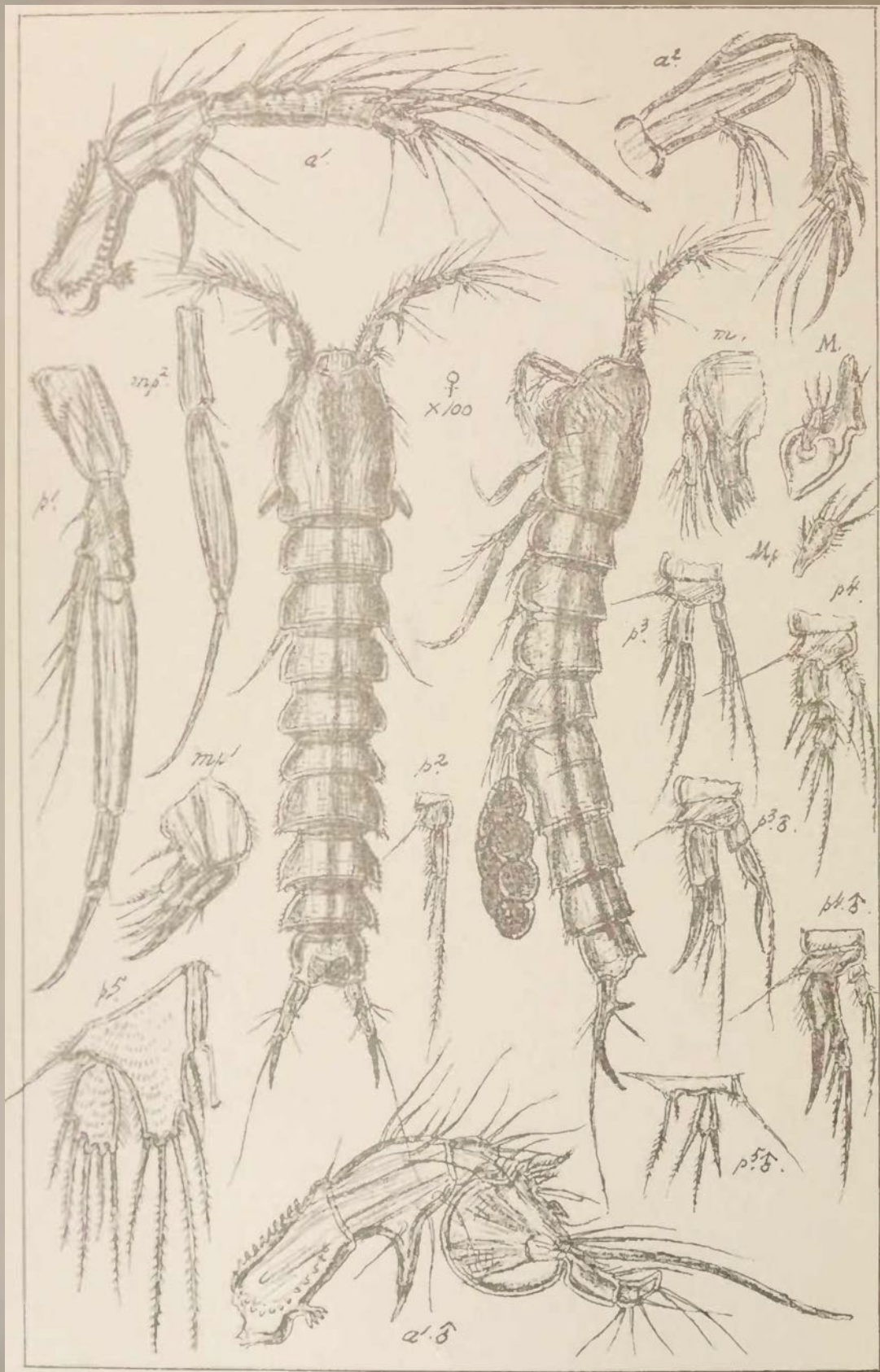


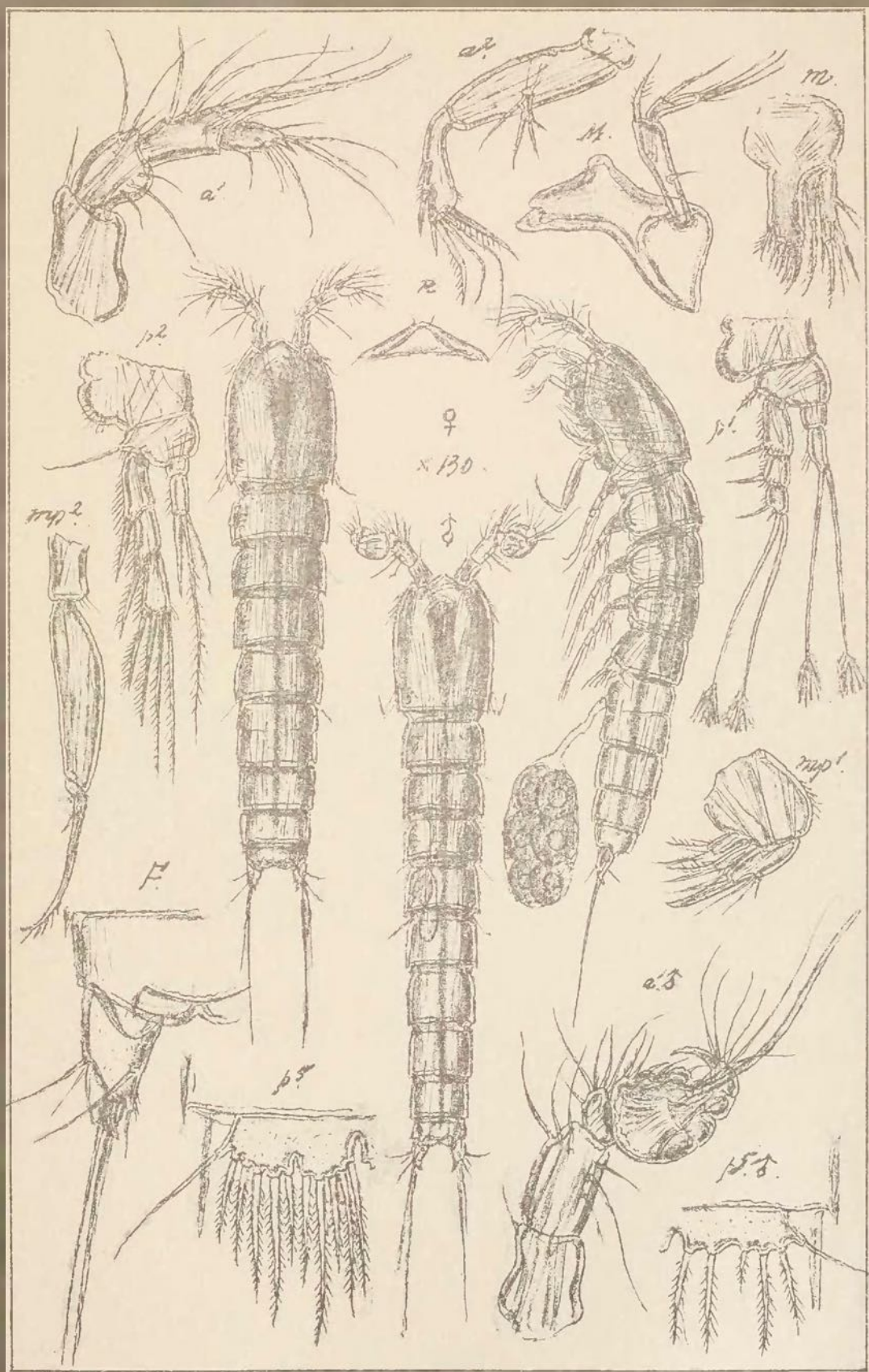




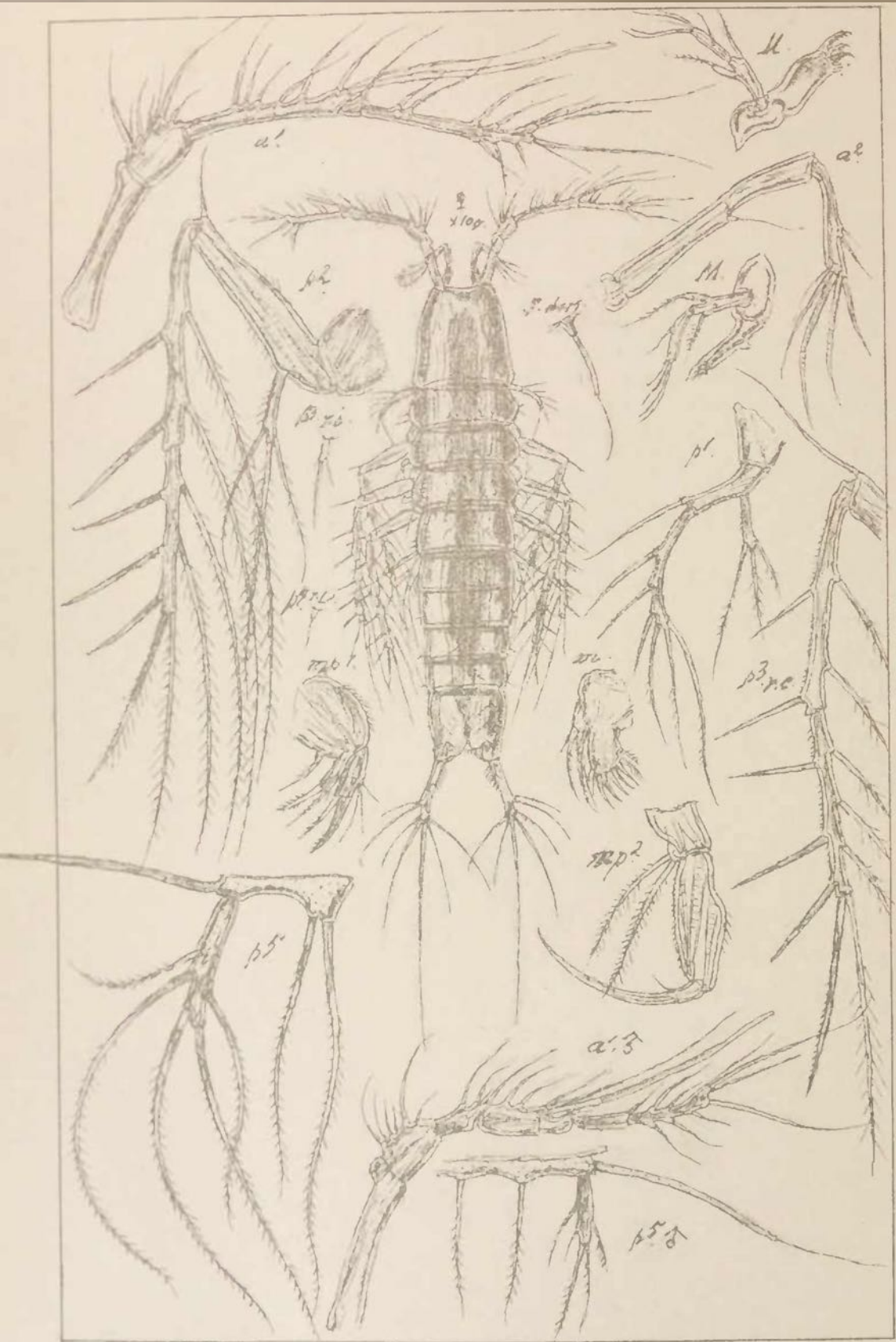


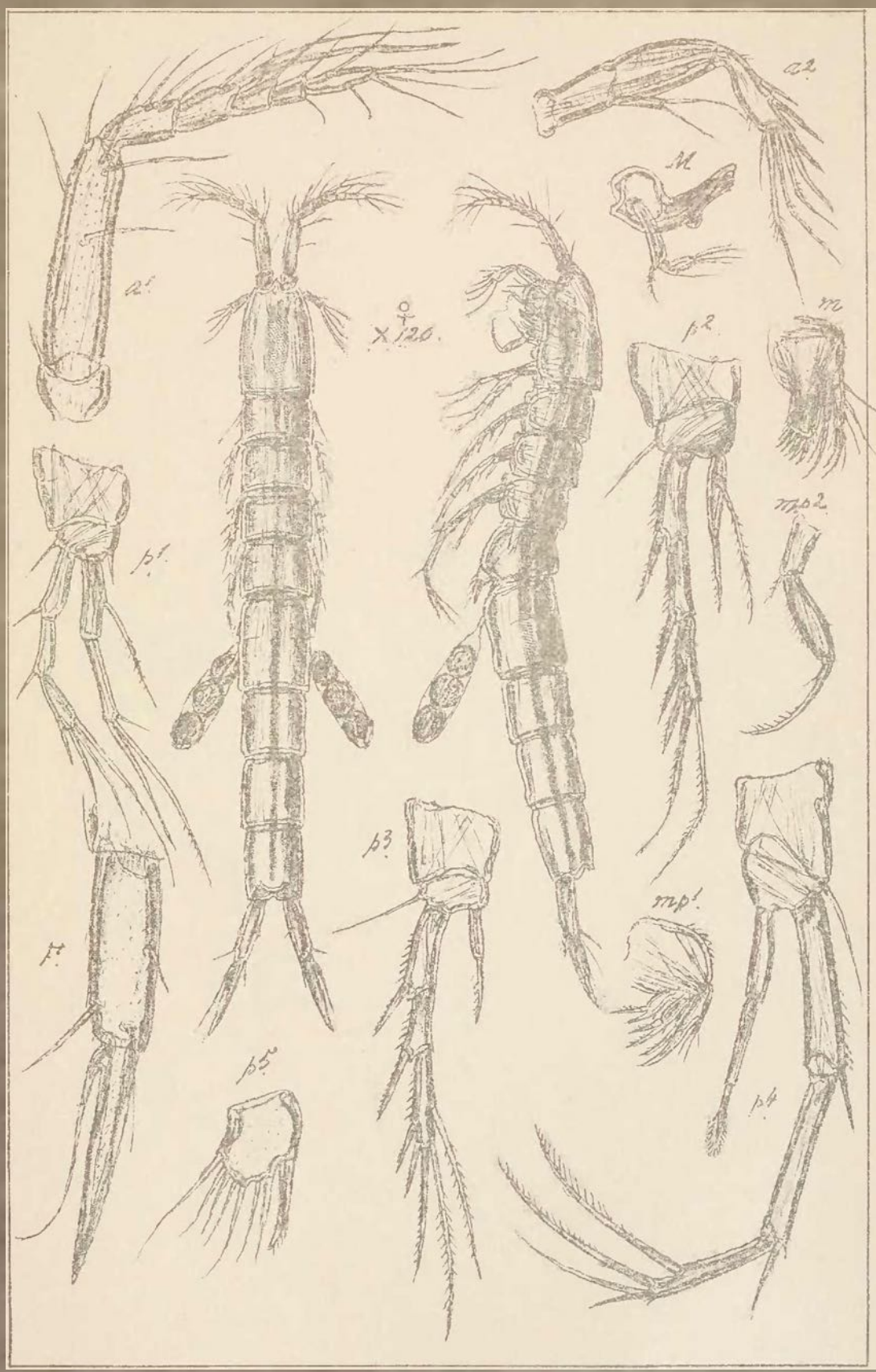




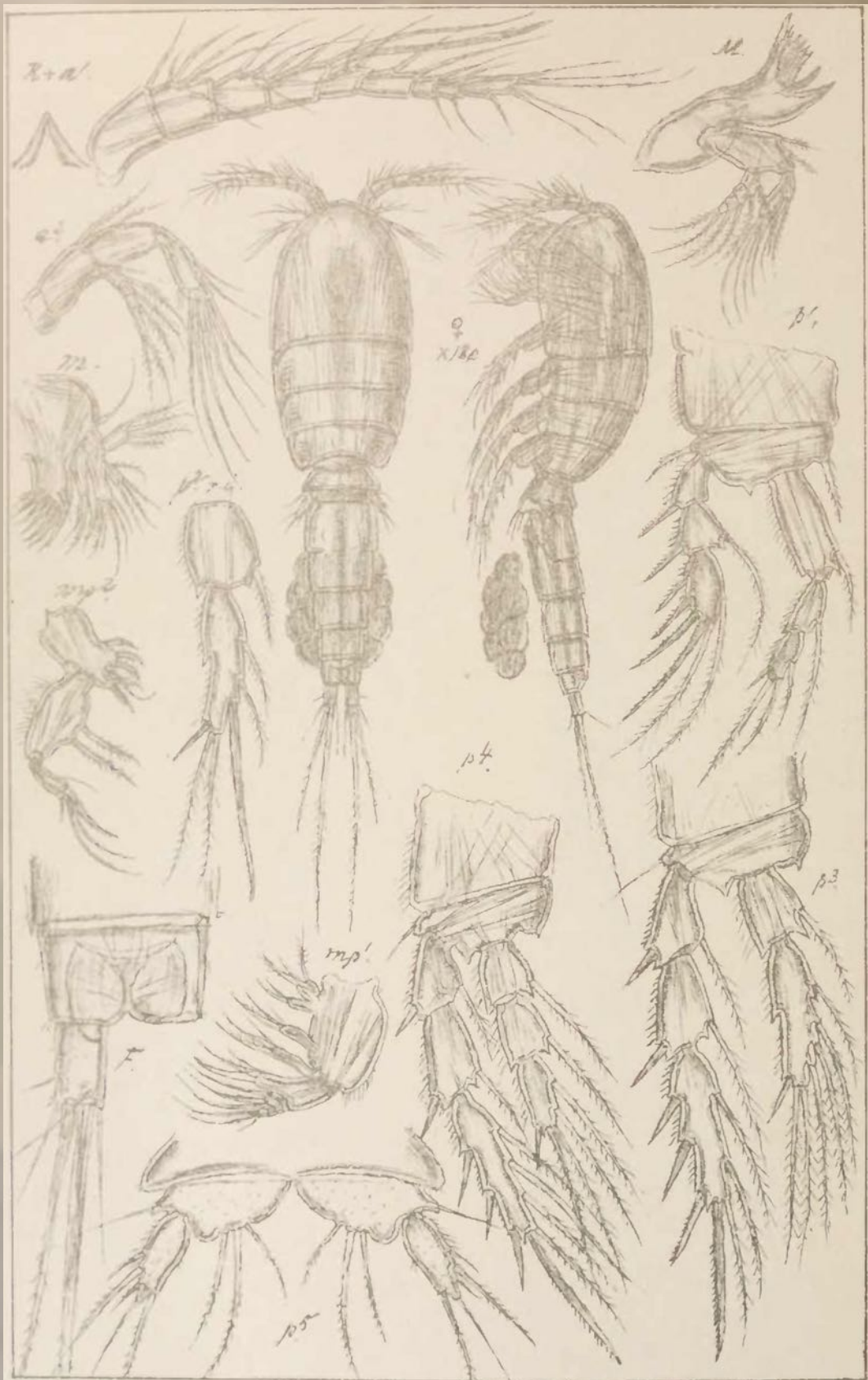














# Copepoda

Ectinosomidae

Harpacticoida

Suppl. Pl. 52

